



# glebe report

March 8, 1996

# glebe report

March 8, 1996

Vol. 24 No. 3

## A night to remember for Glebe stick boy



Photo: Susan Kirkpatrick

Kit Clancey, with his Senators hockey stick, sweater and cap

## Environment committees share some ideas

BY JOHN ZVONAR

In January I had the pleasure to meet with two stalwarts of the Ottawa South Environment Committee, John Bond and Mike Lascelles. We discussed the works that this group has been involved with in the past and their plans for the future. The meeting was long overdue. The Rideau River cleanup and Brewer Pond have been recent projects of note in Ottawa South, and in spite of their great consumption of time, have been well worth it. Anyone who reads the Environment section of OSCAR (under Judy Lascelles' skilful management) will know this. ECOS has developed a 'Mandate' (a manifesto of sorts) which describes their focus and the principal component activities. We have agreed to maintain contact with each other and to work together on issues which merit a larger voice. Considering that both communities share like numbers of residents, and both Bank Street

and the Rideau Canal, this is a good match. Some ideas that did arise included the beautification of Bank Street, further greening of Lansdowne Park (remember the charette of years' past?) and the possibility of a jointly-developed environment fair at the Aberdeen Pavilion. They are simply ideas now, but with a little encouragement and assistance, they are achievable.

### SUPER 8 HOTEL

A special word of thanks to Mike Sheehan of Strathcona Avenue for his 'heads up' recently which forestalled the cutting down of seven spruce trees along the north side of the Super 8 Hotel on Isabella Street. [Mike, people like you make my job so much easier.] Also many thanks to Jim Watson for his concerted effort in this cause. Finally, a special thank you to Mr. Robert Huff of the Super 8 Hotel (former Venture Inn). This community will continue to appreciate the remaining five spruce trees and will help in any

Friday, March 1 was an evening full of excitement for 12 year old Kit Clancey and his parents. Thanks to Chuck Hillock of Capital Home Hardware, Kit's name was drawn as the winner of the Stick Boy contest. He and his parents attended the game between the Ottawa Senators and the Philadelphia Flyers at the new Corel Centre.

Kit was greeted by Torrie Schoel, a public relations volunteer with the Senators, presented with an official Senators hockey jersey and cap, and whisked off to his official duties. From a seat behind the net he watched the entire game and refilled the Senator's water bottles during intermission.

Though the Flyers edged the home team 3-2, Kit Clancey was the real winner. A post game tour of the

players' dressing rooms provided enough autographs to cover all available space on his jersey, and Alexandre Daigle's stick, used in his last game, which left our Glebe Stick Boy beaming. He was impressed with the players' friendliness, and with their dressing rooms which he reports, "have hot and cold tubs." Though Kit does not play on a hockey team, it seems the players were also impressed with his accomplishments as a ski racer. He placed 3rd in Ontario's Inco tournament.

Kit's parents were especially pleased to see 18,500 fans at the Corel Centre enjoying the game. They and Kit send a very special thank you to Home Hardware and the Senators for making it a night to remember.

## A visit from Barbara Ann



Barbara Ann Scott, accompanied by her husband Tom King, took time during her recent visit to Ottawa to visit Abbotsford Seniors' Centre and meet members Jackie Pickup (seated) and Grace Foley.

way we can to ensure their continued presence on Isabella!

### ENVIRONMENT COMMITTEE

The first meeting of the GCA Environment Committee took place on February 20. An energetic group was first treated to an aerial overview of the Glebe to understand the context in which we all live. Following this, recent events were discussed, which lead to possi-

Continued on page 2

### Quote of the month

When the hounds of spring are on winter's traces,  
The mother of months in meadow or plain  
Fills the shadows and windy places  
With lisp of leaves and ripple of rain  
Swinburne

## INSIDE

GNAG.....	6
GCA.....	7
Skate's Beat.....	8
Sport.....	12
Community Centre	
Courses.....	15-18
School News.....	21-25
Books.....	27
Church.....	28,29

# NEWS

## Thinking Day rally

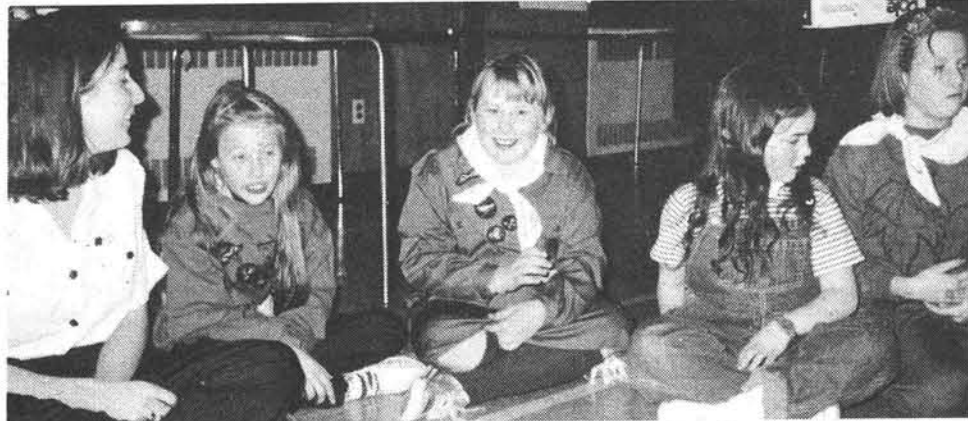
BY SUSAN JERMYN

All the Sparks, Brownies, Guides, Pathfinders, Junior Leaders and leaders in Lansdowne District celebrated Thinking Day February 21 with a great party.

The girls of the 31st Pathfinders planned the evening of games, songs, quizzes about Guiding and

crafts, and made it fun for all!

New leaders received their official pins and girls who designed cookie posters received crests or prizes. Everyone contributed pennies to the World Friendship Fund to support guiding around the world.



Leanne Stephens and members of the 52nd Girl Guide Company



Valerie Muise, Leslie Murphy, Christina Grammenos and Louise Koo of the 31st Pathfinder Unit

## Searching for Women of Distinction

Do you know a woman whose achievements should be celebrated? A woman who has made an outstanding contribution to the Ottawa-Carleton community, either through her professional or volunteer work? A woman who has given her time and experience to enrich the lives of women and the local community?

Now is your chance to honour a remarkable woman who has truly made a difference in the National Capital Region by nominating her for a "Women of Distinction Award," sponsored by the YMCA-YWCA of Ottawa-Carleton.

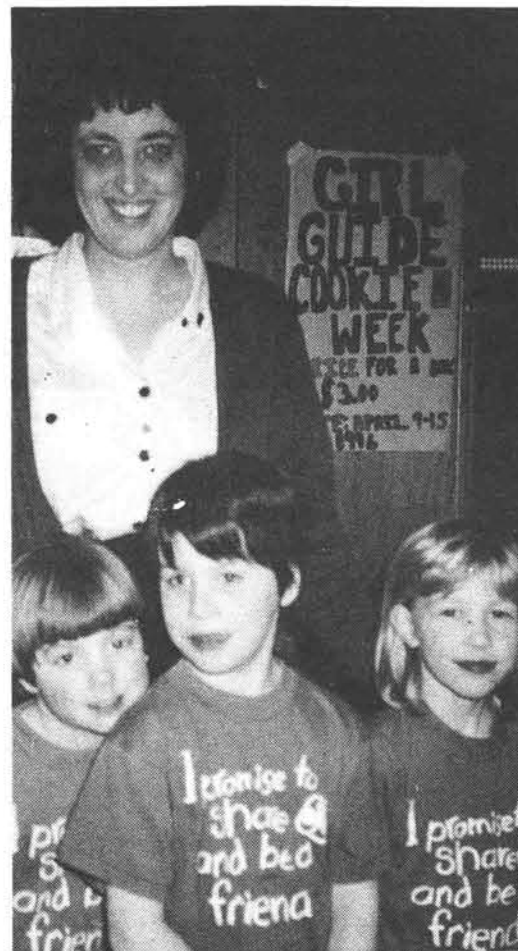
Now in its third year, the annual "Women of Distinction Awards" recognizes the exemplary contributions of women in the following categories: Arts and Culture; Business, Professions and Trades; Communications and Public Affairs; Community and Volunteer Contribution; Education, Training and Development; Health, Sciences and Technology; and Sport, Fitness and Recreation.

"This year, we have added a new award to recognize the outstanding achievements of a young woman in **March 8, 1996 Glebe Report-2**

our community," explains Ivy Taylor Williams, Chair of the Women of Distinction Awards Committee. "The Young Woman's Leadership Award will pay tribute to a young woman who is between the ages of 16 and 24. We are looking for someone who has touched the lives of those around her, perhaps in school, her community or where she works."

Last year's recipients include distinguished musician and philanthropist Luba Sluzar Pope; Dr. M. Josephine Flaherty, retired principal nursing officer with Health Canada; Katherine Jeans, vice-president of Sound Ventures Production; Nancy B. MacNider, executive director of St. Mary's Home; Dr. Sylvie Stachenko, director, preventive health services division with Health Canada; Suzanne Robinson, management consultant and psychotherapist; and Judy Kent, fitness consultant and president of Kent Consulting.

Nominations close March 15. Recipients of the Women of Distinction Awards will be honoured at a gala dinner on June 13, 1996 at the Ottawa Congress Centre.



Dawn Weber and members of the 52nd Sparks Unit

## Girl Guides 'ham it up' for Guide-Scout Week

Close to 10,000 members of Girl Guides in the National Capital Region and the Outaouais celebrated Thinking Day, the joint birthday of Lord and Lady Baden-Powell, on February 22nd. Celebrations were held throughout Guide-Scout Week February 18th to 25th, at special gatherings, campfires and malls around the region.

On February 17th and 18th, members of Girl Guides participate at several locations in GOTA, 'Guides on The Air.' With the help of ham radio operators, girls spoke with other members of Guiding across the country and around the world. The World Association of Girl Guides and Girl Scouts (WAGGGS) is the world's largest organization for girls and women with 129 member countries.

One of the GOTA ham radio sta-

## Calling all activists

Join us for food, fun, and fulfillment! March 20 is the day, 6 p.m. the time, the Peace and Environment Resource Centre (174 1st Avenue, 3rd floor) the place.

A representative from the Forestry Working Group at OPIRG-Carleton will be present to provide information and inspiration concerning the threat to the forests of Temagami. We will be writing letters to decision-makers in order to let them know that our old-growth forests are more precious than logging or mining activities, and to suggest alternatives to large-scale

## Environment Committee continued

bilities for this year and beyond.

We are to meet again, Tuesday, March 19, in the Upper Meeting Room of the Glebe Community Centre. At that time we are expecting a talk from a member of the Master Gardeners' club. We are quickly approaching spring, and every piece of information will help. We will also begin the planning for Central Park clean-up and continued restc ation at this time. So all of you reliable folks from Powell, Renfrew and especially Rosebery, do attend! We welcome the rest of our community as well.

Please contact me via the GCA telephone mailbox, 234-6418 if you want to get involved!



tions operated from the National Museum of Science and Technology as well.

Each year in February, Sparks, Brownies, Guides, Pathfinders, Rangers, Cadets and leaders, plus Link and Trefoil Guild members, turn their thoughts to their sisters-in-Guiding around the world, as well as to Guiding's founders and origins.

1996 marks the 86th Anniversary of Girl Guides of Canada - Guides du Canada.

For more information on Guiding in the National Capital Region, please call Sheila Urquhart, Area PR Co-ordinator, at 521-8788; Lynn Kaplansky, Deputy Area PR Co-ordinator at 731-6141; or Ottawa Area Guide House at 761-1099.

forest destruction.

Decisions will be made in early April, so we must act now! We know that politicians pay attention when citizens voice their concerns. History demonstrates that our efforts do have an effect.

Bring your favourite (preferably vegetarian) dish, eating utensils, pen, paper, and your appetite to this letter-writing/potluck dinner event. Other activists will be waiting to see you there.

For more information, phone 230-4590 and ask for the At-Home Activist potluck.

## Literary readings a hit with Glebe Centre residents

When George Hiemstra retired and moved to the Glebe from southern Ontario, he brought with him a special volunteer experience to offer to his new community. A senior elementary school teacher and an experienced "audience reader," Mr. Hiemstra had organized and volunteered in a program in which he read a variety of literary selections to residents in a seniors' residence. Having found the experience personally satisfying and recognizing the enjoyment and benefits it could bring to elders in his new community, he approached the Glebe Centre and proposed starting a similar program. Since it began last November, the Thursday afternoon "Literary Group," which now attracts up to 25 participants, has become a regular and increasingly popular part of the program of activities offered at the Glebe Centre.

Mr. Samuel Murray is one of the

regulars in the Literary Group. At 102 years of age, Mr. Murray welcomes the chance to indulge once again in his life-long love of reading, curtailed in recent years by poor eyesight. "Words were my career," explains Mr. Murray -- first as a typesetter in a printing company and later as a proofreader. He doesn't like books on cassettes, he admits, but now appreciates not only the selections which "are to his taste," but also Mr. Hiemstra's good voice and clarity in reading.

George Hiemstra, for his part, enjoys meeting and learning more about these Glebe neighbours. One of the real pleasures of dealing with people of an older age, he says, is how much they know. The readings often evoke memories of their rich and experienced backgrounds, and ideas thrown out to the group spur a range of reactions.

The Glebe Centre has been equally delighted with the new pro-



Glebe Centre resident, Mr. Samuel Murray (l) joins George Hiemstra (r), a volunteer audience reader, for the Thursday afternoon Literary Group.

gram. "Mr. Hiemstra's proposal targeted a real area of interest for a number of residents," explains Cheryl Ledgerwood, Supervisor of Volunteer Services, "and is consistent with our goal of providing activities that are enjoyable and

stimulating for our residents."

The biggest challenge facing Mr. Hiemstra and the Literary Group in the coming weeks may be trying to decide what to read next...perhaps something from Robertson Davies, or maybe a taste of Kipling?

## Spring welcome at Abbotsford

Join Abbotsford Members, staff and class instructors on Monday, April 1 from 1:30 - 3:00 p.m. for a warm welcome to the Centre. Enjoy refreshments while you learn about courses and activities being offered this spring at the Centre. Those who wish, may register for one of the many classes offered, including Weight Training for Seniors, Aerobics, Tole Painting and Bridge, or take out memberships at this time. Free Spring Program Guides will be available soon at 954



Bank Street in Ottawa. Call 230-5730 for more information.

## Family dinner marks 60th anniversary of 36th Scout Group at Glebe-St. James

BY DOUG SELLEY

Each year, the 36th Ottawa Group holds a family dinner during Scout - Guide week. This year's dinner was different in that it also marked the 60th anniversary of the group.

On February 23rd nearly 100 children, parents and Scouters gathered together in Fraser Hall, Glebe - St. James United Church, for a pot-luck supper. There were several special guests for the dinner including Stacie Chamberlin, Commissioner, Chaudière Area (Scouts Canada), former Scouters Adrian Camfield and Warren Forrester, and the Rev. Jack Nield.

A number of awards were presented by Mrs. Chamberlin: Scouters Bryan Ault, Johannes Hill, Lawrence McCulloch, Doug Selley and William Vernon were presented with Scouts Canada Warrants of Appointment. Susan Rosove was presented with the ten-year service award. Doug Selley, chair of the 36th Ottawa Group Committee presented Honorary Scouter certifi-

cates to former Scouters Adrian and Warren.

The anniversary was also marked by the release of a booklet of Reminiscences of the Group, and by photo displays. A number of copies of the booklet are still available. If you would like one, please call Doug Selley at 234-9274.



## Volunteer opportunity

Abbotsford Senior Centre is seeking volunteers to assist in a new Alzheimers Day Program. This position will interest energetic people with a positive, friendly approach to life who have experience in seniors programs. Extensive training will be provided. Call Janice Bridgewater, Senior Centre Director at 230-5730



## Are you ready to travel healthy?

Anyone thinking about travelling to high risk areas of the world (not the US or Europe) should attend this special program on "Travelling Healthy." Learn about strategies on disease prevention, jet lag, food and water precautions...and much more. The next program will take place on Wednesday, April 3, at 7:00 p.m. in the Bickell Room at the Ottawa Civic Hospital.

The program is offered free of charge and is presented monthly by the Ottawa Civic Hospital Infectious & Tropical Disease Clinic and the Riverside Hospital Travel Medicine Clinic. SmithKline Beecham Pharma is sponsor of this series of talks.

For more information call 233-3092

## Safer communities conference

**Safer Communities: Working Together** April 24 5:30 - 9:00 p.m., April 25 8:30 a.m. - 3:30 p.m. at Ottawa City Hall 111 Sussex Drive.

The Crime Prevention Council of Ottawa will hold a community conference on April 24 and 25 at Ottawa City Hall. *Safer Communities: Working Together* is designed to increase community awareness and

bring together community members, to share information, experience and ideas. The conference will also provide participants with practical information and direct access to local resources.

Participants will have the opportunity to choose from 17 different workshops. For further information contact Eric Bunkis. Telephone 244-5645. Fax 244-5373

### Riverside Travel Medicine Clinic

#### BEFORE YOU TRAVEL:

- immunizations
- anti-malaria medication
- health advice

For an appointment with physician or nurse

Call 733-5553

RIVERSIDE PROFESSIONAL CENTRE  
1919 RIVERSIDE DRIVE, SUITE 411

# EDITORIAL NOTES

Views expressed in the Glebe Report are those of our contributors.  
We reserve the right to edit all submissions.

## Desperately seeking signs of Spring!

As I slipped and sloshed my way to and from the *Glebe Report* office and other places during the last few weeks, I had nothing but sympathy for the more elderly and less physically endowed as they cautiously picked their way along Ottawa's hazardous sidewalks.

In puzzling over the choice of a cover for our March issue, I blackly envisioned a cartoon featuring a determined pedestrian navigating Glebe sidewalks, clad in a thermal wet suit, goggles, snorkel, a flotation device and a pair of well spiked mountain climbing boots. In the background, of course, would be the inevitable, unimpeded motorist, speeding by and covering said pedestrian with yet another sloppy deposit of the latest product of Ottawa streets, 1996 vintage ice wine. Clearly there's a market for private enterprise (calling all fashion-conscious outfitters!) to fill in the gap left between the City's snow clearing cutbacks and Mother Nature's increased output of snow and rain this winter.

Instead, as you've already noticed, I chose to be optimistic about what else March can bring — Spring. With the gracious permission of the Glebe's own famous photographer, Malak Karsh, our cover features one of my favourite photographs. I thank him, and Key Porter Books, publishers of the book, *OTTAWA and the National Capital Region*, for letting us share it with our readers. It's an image that definitely lifts our spirits as we look forward to spring.

### GREAT GLEBE GARAGE SALE - SATURDAY, MAY 25

Another sign of spring in the Glebe is the annual call for volunteers to help with the Great Glebe Garage Sale, the Glebe Community Association's annual fundraiser for the Ottawa Food Bank. Please call Coordinator, Kathryn Bradford at 234-3198 if you want to help this worthy cause and meet a lot of nice people in the process. This event is also a great opportunity for local schools, churches, and other organizations to help the Food Bank while holding their own fund raisers.

### MARCH BREAK & OTHER MARCH ACTIVITIES

A variety of activities for children and youth will take place this month, especially during March Break. See our school pages as well as pages 10, 26, and 30.

### CONGRATULATIONS TO JOHN LEANING

Now that he is a grandfather, long-time Glebe resident and well-known Ottawa architect, John Leaning, has turned his creativity to the pleasurable pastime of writing and illustrating a series of books "for grandchildren of all ages." See review on page 27. The fun he is having doing this is evident in all the books which are a treat for the eye. Hats off to Granddad! John, can you really stand on your head like that?

## OUR CARRIERS

Jennie Aliman, James and Amy Avila, Carman, Michael and Daniel Baggaley, Dorion and Julia Berg, Inez Berg, Erica Bernstein and Family, Marylou Bienefeld, Sally Bitz, Emma and Zoe Bourgard, Nathan and Devon Bowers- Krishnan, Bowie Family, John Francis Brandon, Brewer Pool, Mollie Buckland, Hannah Burns, Lyra and Hartley Butler-George, Jessica Button, Rachel, Mary, and Tom Cameron, James Cano, Katherine and Matthew Carr, Jessica Carson, Christina & Alexandra Chowaniac, Kit Clancey, Jeremy Clarke-Okah, Veronica Classen, Cochrane Family, Adam Cohen, Coodin Family, Andrew Dagger, Marilyn Deschamps, Amy and Mary Deshaies, Pat Dillon, Kathryn Dingle, Amanda DiMillo, Bruce Donaldson, Heather and Sarah Donnelly, Bill Dowsett, Sean and Harry Dunlap, Oriana Dunlop Dwyer Family, Education for Community Living (Glebe Collegiate), Judy Field, Brigid and Keavin Finnerty, Noah Firestone, Christiane and David Fitzpatrick, Brian Foran, Marcia, Max and Dylan George, Marjorie George, Ross and Laurette Glasgow, Nigel and Sebastien Goodfellow, Brendan Greene, Gary

Greenwood, Marjolein Groenevelt, Rebecca Hall, Michael & Christopher Harrison, George Hiemstra, Jake and A.J. Hirsch-Allen, Hooper Family, Horan-Lunney Family, Calvin and Stan Jary, Chris, Caitlin and Devin Jenkins, Paul and Leigh Jonah, Johnston Family, Kennedy Family, Heather King- Andrews, Matthew and Brendan Koop, Mary and Imre Kovacs, Lauren and Jamie Kronick, Glenda and Jan Krusberg, Bonnie Kruspe, Wendy Laatonen, Lady Evelyn P.A.S, Lindsay Family, Melanie and Danielle Lithwick, Gary Lucas, Lyons Family, Anjali Majmudar, Malpass Family, Mazowita Family, McGuire Family, Diane and Leia McIntyre, Emma and Sheila McKeen, Ellen and John McLeod, Tommy and James McMillan, Alix, Nicholas and Caroline McNaught, Julie Monaghan, Zachary, Nathan, and Jacob Monson, Nadia Moravec, Murdock- Thompson Family, Sana Nesrallah, Amanda Olson, Michael Pettit, Claire Prentice, The Pritchards, Natalie and Marc Raffoul, Zac Rankin, Mary and Steve Reid, Colin and Tim Richards, Robertson Family, Audrey Robinson, Toby Robinson Susan Rose, Rutherford Family, Margie and Leigh

Schieman-Widdowson, Faith and Gerd Schneider, Ellen Schowalter, Scott Family, Mrs. K. Sharp, Short Family, Tim Siebrasse, Smith Family, Vern Murrin, Sobriety House, Denise and Lucas Stethem, John and Maggie Thomson, Thomson Family, Trudeau Family, Allison Van Koughnett, Gillian Walker, Lisa and Mary Warner, Jim Watson, Erin, Alexander and Keilan Way, Micheal, Matthew, Neil and Jan Webb, Vanessa Wen, Stephan Wesche, Chantal West, Nathan Wexler- Layton, Matt Williams, Andrea and John Wins-Purdy, Vanessa Woods, Kevin and Kelly Wyatt, Delores and Harold Young, Julia, Eric and Vanessa Zayed.

**GLEBE REPORT ROUTE  
STILL  
in need of a deliverer:**

**CLAREY STREET -  
Both sides**

**Please call 238-357  
if you can help.**

## glebe report

P.O. BOX 4794, STATION E  
OTTAWA, ONTARIO, K1S 5H9  
ESTABLISHED 1973  
TELEPHONE 236-4955

The *Glebe Report* is a monthly newspaper. We receive no government grants or subsidies. Advertising from Glebe and other merchants pays our bills and printing costs. 6500 copies are delivered free to Glebe homes and copies are available at many Glebe shops, Ottawa South Library, Brewer Pool and Glebe and Ottawa South Community Centres. A subscription costs \$14.98 per year. To order contact our Business Manager.

EDITOR:	Inez Berg 233-6063
ADVERTISING MANAGER:	Meredith Olson 236-5967
BUSINESS MANAGER:	Sheila Pocock-Brascoupé 233-3047
CIRCULATION MANAGER:	Christian Hurlow 238-3572
EDITORIAL ASSISTANT:	Susan Jermyn

STAFF THIS ISSUE: Barbara Brocklebank, Susan Carson, Sally Cleary, Anne Donaldson, June Filipkowski, Eva Golder, Christian Hurlow, Sue Jermyn, Mary Kovacs, Meredith Olson, Judy Peacocke, Hélène Samson

COVER: Photo by Malak, from *OTTAWA and the National Capital Region*, 1990, Key Porter Books, Courtesy Malak Karsh.

LEGAL ADVISERS: Russell Zinn, Peggy Malpass

DISTRIBUTION STAFF: Cheryl Casey, Courtright Family, Marjorie George, Geoffrey Gordon, Gary Greenwood, Carolyn Harrison, Brian and Marjorie Lynch, Deborah McNeill, Nadia Moravec and Peter Williams.

ADVERTISING RATES ARE FOR CAMERA-READY COPY.  
The *Glebe Report* is printed in Renfrew, Ontario by Runge Newspapers Inc.

**The next *Glebe Report* will be out April 4.  
Monday, March 25 is our deadline  
for copy and advertising.**



## Memories can fade, even in the Glebe

Editor, *Glebe Report*,  
Clyde Sanger's February Glebe Questions column commented on why Fourth Avenue parking meters extend no farther east than the Fifth Avenue Court property line. The main reason is that Council agreed that meters should not abut residentially-zoned property.

Diane McIntyre reported that the City proposes to drop the Glebe Neighbourhood Plan's three year ownership requirement for residential conversion (from, say, single family to apartments). Her concern focused on "more development by absentee landlords who may not be committed to the vitality of our community."

The original intent, as I recall, was to discourage real estate speculation ("quick flips," etc.) fueled by the promise of increased revenues from conversions. The GCA argued that such speculation could destabilize the balance of the Glebe's housing mix. However, if an owner, whether absentee or resident, was willing to wait or had owned the property for the requisite period, the conversion could proceed.

So would the question be: does the Glebe require, now or in the

foreseeable future, the three year ownership rule to help maintain the current housing mix?

Her other planning concern arose from the proposed requirement for a parking place for each new conversion unit. She indicated that this would "create pressure to convert front yards to parking spaces." If one believes (as Diane stated she does) in "neighbourhood intensification," does not the current almost overwhelming demand for on-street parking strongly support the conversion parking requirement?

To protect a front or backyard from being totally blacktopped, might it not be better to require that conversion parking spaces not exceed a specific proportion of the lot's 'green space' and that they meet a high landscaping standard? Would not such a rule also help to ensure that converted units be a reasonable size?

Finally, I sadly report that the for-sale sign at Sylvia and Clem Holden's house bears a "sold" sticker. Although they will doubtless continue to visit the Glebe, that "sold" sticker does seem to mark the end of an era in this community's activism.

Rob Quinn.

## Parking bylaw makes no sense & hurts Glebe businesses

Editor, *Glebe Report*:  
RE: PARKING OFFENCE  
#D497132 - Park within 1.5 metres of laneway.

On October 19, 1995, I parked within 1.5 metres of a laneway on Thornton Avenue, just off Bank Street. I was parked there from 6:55 to 8:35 p.m. while I attended a yoga class at a fitness studio on Bank Street. The laneway in question is the side entrance to a business establishment—a muffler repair shop—that had finished its business for the day. At the time I parked, there was a small red car parked on that lot, within and across this supposed laneway. There were no signs indicating any special parking restrictions, such as the one for which I was ticketed. This is not one of the standard parking offences, so the ticketing officer had to actually write it onto the ticket.

I am not available for the May 10th trial date set for the above-

noted offence. Rather than rescheduling the trial, I have decided to pay the fine of \$30, the total payable indicated on the Notice of Trial issued January 2.

Other than the date, the backlog of cases in provincial court weighed into my decision to simply pay the fine. I no longer believe that a judicial process in this case will best serve the public interest or my own. I do not believe that what I did should be considered an offence.

I have two conclusions from this experience:

1. The City of Ottawa has a pretty neat little scam for generating money—ticketing people for things they have no way of knowing are wrong. No sign, no prior notice, and no sense.
2. I will take my business elsewhere, whenever possible. Goodness knows what I'll be ticketed for the next time I'm in the neighbourhood of Bank and Fifth.

Yvonne Helwig

## Architect questions Glebe Centre /Abbotsford projected addition

Editor, *Glebe Report*:

I live on the north side of Woodlawn Avenue near Monk Street where a major construction project, the Glebe Centre Abbotsford House Addition, is going to be constructed in the existing parking lot, south of the building starting this spring. This will be the largest construction project to take place in the Glebe for many years and nobody has seemed to notice.

In general I support this project. It is preferable to a wind swept parking lot and an unimpeded view of buses and cars speeding along Bank Street in front of the worn and seedy entrance to Lansdowne Park. However, this is one of the last large open areas in the Glebe and its development requires careful attention. I am not alone in this opinion.

I received notice of a LACAC (Local Architectural Conservation Advisory Committee) meeting on February 6, 1996 and was the only person in attendance from the community who had any comments. LACAC passed a motion which expressed concern about the design in regards to the way the new project fits with the existing Abbotsford House and the existing neighbourhood. I share that concern. Generally the design is a mediocre suburban solution that makes little or no attempt to be sensitive to the surrounding neighbourhood. Among the many poorly conceived design notions are the extensive use of oversized beige brick, mansard roofs and fake shutters. The recently disbanded City of Ottawa Design Committee also expressed many concerns in regards to the design. All their concerns are now non-issues with the disbanding of that committee.

When reviewing the site plan, I note that a large mass of the building south of the main entrance projects towards Monk Street. When I relate the site plan to the Monk Street elevation I note that this large mass is the least detailed and most poorly composed part of the Monk Street elevation.

Considering that this part of the building is closest to the street I suggest that the impact of its mass be softened.

The top of the archways near the entrances are weak in composition and relate neither to the existing Abbotsford house roof slopes nor the proposed roof slopes. Further study of these elements is required.

It was stated that there is going to be a large number of roof top units supposedly concealed by the mansard roof. These units will likely be over seen from the third floors of many houses in the neighbourhood. Also, care should be taken to choose units that are not noisy.

I have written a letter expressing my concerns to the Planning and Economic Development Committee and copied LACAC, Jill Watson, the Glebe Community Association, and all members of the City of Ottawa Planning and Economic Development Committee. The project received unconditional approval at Planning Committee on February 13, and a building permit is being processed right now.

The project manager has gracefully agreed to set up a meeting with myself and the project architect to discuss the concerns expressed above. I hope I can have some impact on the design.

Christopher A. Leggett, OAA  
MRAIC

### NORMA PETERSON

Visually "lose weight" with Norma's unique styles

- Exciting new colours/fabrics
- Very affordable prices

SIZES 4-24 \*

167 Sparks Street • 230-8455



## Our volunteers working for you

### GNAG VOLUNTEERS

Take a peek into the office of the Glebe Neighbourhood Activities Group. Jennie Aliman, the Chairperson, Mary Lovelace, our Vice Chair and Mary Pal, our Secretary have wrenched us into the 21st century. We not only have a new IBM compatible computer but we now have a phone!

Most of the community is unaware of the amount of time spent by these three individuals *voluntarily* for the likes of you and me. Next time you drop off your child at pottery class or sign up for fitness be aware that a good portion of the work is done by these volunteers. Whether it is organizing programming or inputting data or stapling up flyers this is the unpaid labour of commitment.

### GNAG OFFERINGS

Spring is fast approaching and GNAG will be offering a wide range of programming:

### BRUCE AND THE BURGERS

Polish up your dancing shoes! Sixth Annual Adult Dance: April 13th.

### REGISTRATION FOR SPRING PROGRAMMES:

March 23rd -10 a.m. to 2 p.m.

### MARCH BREAK REGISTRATION:

March 11-15, and March 18-22.

For ages 5-12, \$85 for first child per week, \$80 for second, \$25 per day. After four care is \$5 per day (this fee is included in the regular After Four programme.)

### SOCCER REGISTRATION:

Monday April 1st. 7 p.m.- 8 p.m.

See *Glebe Report* for details.

### YOUTH CAFÉ:

March 15th and 22nd, 7 p.m. - midnight

### CRAFT FAIR:

March 30th, 10 a.m. - 5 p.m.

### FLEA MARKET REGISTRATION:

March 18th 7 p.m. - 8 p.m.

### WHITTON AWARDS:

March 18 7:00 p.m. in the Assembly Hall, Lansdowne Park.

## Rainbarrels

\*LIMITED SUPPLY NOW AVAILABLE AT\*

Conserve  
by using  
rainwater!

# Arbour

Only  
**\$59.95**  
(plus tax)

Our recycled rainbarrel has a brass hose fitting, an overflow pipe and a leaf and debris screen. It is easily installable to eavestrough downspout, is paintable and will hold 45 gallons of water! Order now for an "early April" pick-up or delivery!

VOICE: 567-3168 (800 Bank Street in the glebe ) FAX: 567-3568

Take Control of Your Health 234-4882

NATUROPATHY  
ACUPUNCTURE  
CHIROPRACTIC  
SPORTS INJURIES  
EXERCISE/PHYSICAL REHAB. THERAPIES  
GENTLE TECHNIQUES  
FOOT ORTHOTICS  
YOGA, MASSAGE  
HOMEOPATHY  
VITAMINS HERBS  
NUTRITION

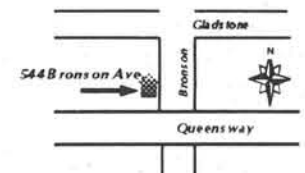
**ACTIVE HEALTH**  
Center for Holistic Therapies

## OPEN HOUSE

Sat. March 16th, 2-6 pm

544 Bronson Ave.

FREE Demos of Chiropractic Refreshments



## THE OTTAWA SCHOOL OF *speech & drama*

in association with  
The National Arts Centre English Theatre

## CHILDREN'S THEATRE WORKSHOP CAMP

Explore the exciting world  
of theatre with professional  
actors, directors and  
teachers in our theatre studios.

Grades 5 to 13

**SESSION 1: JULY 8 - 19**

**SESSION 2: AUGUST 12 - 23**

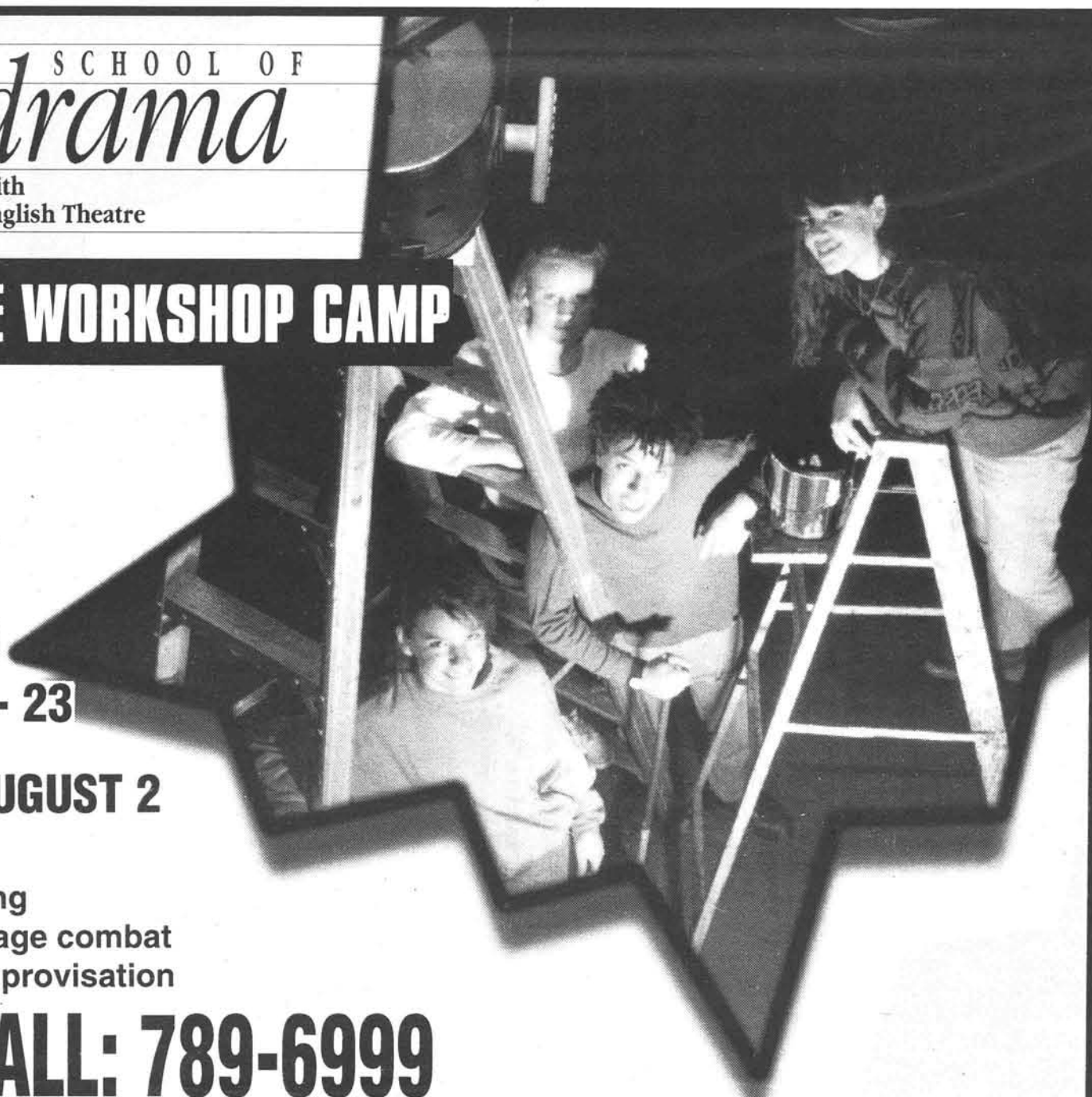
Grades 2 to 4

**SESSION 3: JULY 29 - AUGUST 2**

**You Will Learn . . .**

Clowning • Mask • Story telling  
Pantomime • Melodrama • Stage combat  
Musical Drama • Makeup • Improvisation

# TO REGISTER CALL: 789-6999



## Start thinking about Great Glebe Garage Sale

By  
G.C.A.  
President  
Diane  
McIntyre



The GCA Team are looking for volunteers to help with the organization, planning and publicity for the 11th Annual Great Glebe Garage Sale scheduled for Saturday, May 25th. Please call Kathryn Bradford at 234-3198 if you can devote some time to this very worthwhile effort. For those who are new to this region, the GGGs is a community-wide event sponsored by the Glebe Community Association event in support of the Ottawa Food Bank. Individual sales are held on driveways, porches, and front lawns. The GCA promotes the day-long event encouraging participation of residences, business, and organizations.

It features music, lemonade stands, church lunches, meeting neighbours and recycling all sorts of treasures. All members of the community are welcomed to join in by registering their sale location and after the sale giving 10% of their proceeds to the Ottawa Food Bank. Thanks to the efforts of Kathryn's team last year, the community gave over \$8,000 to the Food Bank.

We've already had inquiries about registration so here are a few answers to the most asked questions. Registration forms will be printed in the April issue of the *Glebe Report* and will be available at the Glebe Community Centre after April 10. The GCA does not rent space for this event, each participant hosts their own sale on their own property or in cooperation with their organization (i.e. church luncheon and sale, school fund-raiser) Income tax receipts will be automatically issued for contributions over \$10.

There will be drop off points for non-perishable food contributions as well. We hope to have a sign contest with prizes for the best signs promoting the event.

We need volunteers to ensure the success of this event so please join the team by calling 234-3198.

### SCHOOL ZONE SAFETY

Thanks to Regional Councillors Alex Cullen and Brian McGarry for spearheading a campaign to restore funding for the adult crossing guard program at Bank and Sunny-side after it was cut from the City of Ottawa's budget. The Hopewell

Parent Advisory Committee, Community Associations, and numerous others rallied and have succeeded in gaining funding for calendar year 1996 from the Ottawa Carleton Regional Police.

Thanks also to Mr. McGarry and OC Police Chief Brian Ford for arranging for police monitoring of stop signs in response to requests for measures to ensure safety of community children. Also for safety, Councilor Jim Watson advises that "Children Playing" signs will be installed - on the SW corner of Lyon and Chamberlain (near the soccer field) and two on O'Connor near First Avenue School south of Glebe Avenue and near Monkland.

### TRAFFIC AND PARKING

Over the past six months the GCA has heard from residents living on Powell, Glebe, Broadway, Pretoria and Fifth Avenues with respect to traffic speed and volume. The GCA has expressed concerns to the City and have been put on a waiting list for a traffic study which could happen in 1988. If you have comments on the traffic situation please provide feedback to the City via Councilor Jim Watson's survey in the February issue of the *Glebe Report*. Also send us copies of your comments so that we can maintain an overall view of community opinion. They can be forwarded to GCA- Traffic c/o Glebe Community Centre, 690 Lyon St., South Kis 3Z9.

Lansdowne Park currently has 2058 parking spaces while its current zoning stipulates a requirement for 3082. The City has proposed a change in zoning to match the available spaces. Local resident Laszlo Palhazi asked the GCA to support a motion to hold the City to the existing zoning (i.e. requiring them to find or provide space for an additional 1024 parking spots). This motion was defeated by the GCA.

### ZONING - Z2020

Too many Zs? The City of Ottawa Zoning bylaw Z-2020, a draft proposal seems to have induced sleeping sickness in the community. Copies of the draft bylaw are available at Community Centers and libraries. The GCA has a reference copy main at the main desk at the Glebe Community Centre and I urge residents to take the time to see what the implications are for their part of the neighbourhood. GCA Planning Chair, Bill Metz will summarize the main impacts on our community at our meeting on March 26th, but we'd like to also hear from you if you have areas of concern.

### PROTECTING COMMUNITY TREES

The management of the "Super 8" Hotel in the Glebe, at Metcalfe and

Isabella have responded to the requests of various members of the community to save the remaining trees adjacent to the hotel. Hats off! and welcome, to a new member of our community, Mike Sheehan, who took action last week to protect the remaining five of seven 30 foot spruce trees along the hotel's north wall. Thanks also to our GCA Environment Chair John Zvonar, City of Ottawa Councillor Jim Watson, and City staff for their efforts in communicating our community's concern. Every tree counts in a downtown community, so our thanks to the hotel's manager, Mr. Huff, for halting the plans to remove these mature evergreens.

If you'd like to be involved in GCA efforts to work for the environment in our community please call John Zvonar 232-9155.

### U OF O WALKING SURVEY

A study of neighbourhood walkability and safety is being undertaken by the University of Ottawa for the Record Regional Municipality of Ottawa Carleton. If you'd like to participate please forward your name and address to Professor Barry Wellar via fax 562-5145 or telephone 562-5725.

### YOU'RE ALWAYS WELCOME

Please mark your calendars and plan to attend the GCA Annual Meeting scheduled for Tuesday May 14, 1996 and join us for monthly meetings on March 26 and April 23 at the Glebe Community Centre. Call if you have issues which you feel the GCA should discuss or if you would like to provide us with feedback. You can also send us written messages c/o the Glebe Community Centre.

Take a closer look at volunteering.  
Make a difference in your life...  
or someone else's. Call the Volunteer  
Centre of Ottawa-Carleton, 789-4876.

# PHASE 2

## Spring INTO Casual Wear!

Comfy, cotton weekend favourites for UNDER \$20

cotton sweaters  
\$9.95 - \$19.95

sweatshirts  
\$9.95 - \$19.95

golf shirts  
\$5.95 - \$10.95

rugby shirts  
\$9.95 - \$16.95

long sleeve t-shirts  
\$7.95 - \$16.95

Shopping at PHASE 2 leaves you feeling great!

QUALITY RECYCLED  
BRAND NAME CLOTHING  
AT AMAZINGLY LOW PRICES



Monday - Wednesday 9:30 - 6:00  
Thursday - Friday 9:30 - 9:00  
Saturday 9:30 - 6:00  
Sunday 12:00 - 5:00

Shop  
**PHASE 2**  
QUALITY RECYCLED CLOTHING  
702 Bank St. at Glebe Ave.



# SKATE'S BEAT

## Officers trained on 'Use of Force'



By Sr.Cst. Gary Schuiteboer

The attack was unprovoked and unexpected. I was investigating a suspicious person complaint on the property of a local agency one gorgeous winter afternoon. The subject of the complaint was on the grounds and appeared to be searching for something. I approached the male who seemed to be confused and began questioning him as to why he was on the property. The next thing I knew, I had fallen victim to a "sucker" punch, oldest yet most effective of all pugilistic manoeuvres. I responded immediately, using as much force as necessary to subdue my attacker and placed him under arrest for assaulting a police officer.

I have to admit that I was far too complacent with this individual and I neglected to practice the most elementary rule of street survival for a police officer. When interviewing any subject, a "critical distance" should always be maintained between an officer and the subject. A defensive stance that you would assume in a self defense class is not practical nor is it necessary when an officer is simply trying to establish a typical subject's identity or intentions. However maintaining a "critical distance" in their "street" interview stance will allow an officer time to react if the subject becomes aggressive.

Officers of the Ottawa Carleton Police Service have access to excellent in-house training resources. One course that I thought would be appropriate to pursue, especially after this incident, was the Use of Force program. The course is a refresher for younger officers and a wake up call for the more seasoned officers. Times are changing and the incidents that police officers deal with on the street today are far more intense than they were when I became an officer in 1977.

The instructors are very professional, always suggesting different options for an officer to consider when responding to the many and various situations. An officer must first assess the situation, plan an appropriate response and finally act. This thought process is called

the "Use of Force Continuum." From one moment to the next the officer will choose the most reasonable option relative to a constantly changing situation.

Use of force does not necessarily mean physical confrontations. A uniformed officer simply being present may motivate a compliant individual to move on. Tactical communication and perhaps a non-aggressive empty hand technique will sometimes motivate individuals who are demonstrating passive resistance. The situation becomes more aggressive when a subject exhibits active resistance. The response to this resistance may include empty hand techniques or use of impact weapons for restraining techniques. The officer could also include the use of the issued aerosol pepper spray. A subject who is being assaultive may force an officer to respond using pepper spray or an impact weapon for strikes and blocks.

The most serious of all situations is when the subject threatens serious bodily harm or death. This kind of behavior could include the subject having a firearm or brandishing a sharp edged weapon. The officer would first use verbal commands to instruct the subject not to move. Depending on the subject's reaction to these commands the officer may be forced to use his/her firearm. If there is an opportunity the officer might try to actually disengage from the situation and simply maintain safe perimeter containment of the subject.

Various situations were presented to the officers who were taking the course. Volunteers agreed to act as victims, or suspects in several different scenarios based on true life experiences. Officers were asked to "buy into the program" and to react to the various problems as if they were responding to an actual call. I admit that I did "buy into the program" as I felt my adrenal glands pumping occasionally.

The most impressive teaching aid to illustrate what can happen to an officer who is not prepared to respond to an aggressive situation was the Interactive Computer Assisted Trainer or the I.C.A.T. Simulator. My instructor, Cst. Brad Tierney insisted that the system was not a video game. It wasn't! The entire concept is based on real life situations involving actors and electronic interaction for police response. I wanted to experience every scenario! I had definitely "bought into the program." The instructor decides how the subject, portrayed on the I.C.A.T. Simulator, will react to the officer but more importantly, critiques how the of-

ficer handles the subject! The computer subject will respond to the officer's tactical communication skills. Each scenario can go in a different direction from one moment to the next. The same situation can become more or less aggressive depending on how the instructor judges the officer's communication skills within that particular scenario.

At the end of the course, officers were asked to critique the training program. I found the material informative and most challenging, however I did suggest that the one day course be extended to a two day program. I could have spent that

entire second day just using the I.C.A.T. Simulator!!!

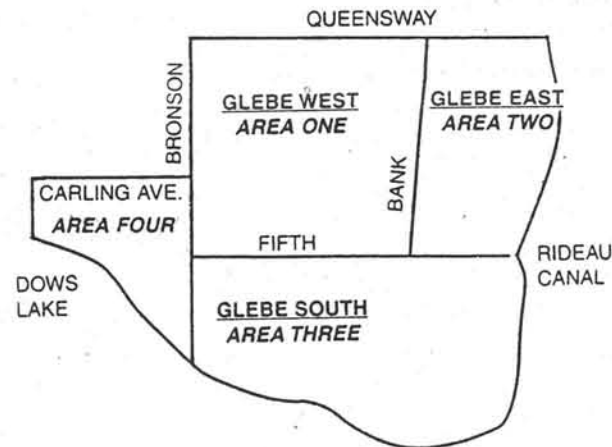
### ASK SKATE

My purpose has always been to become more involved with the concerns of the Community I patrol. The *Glebe Report* has been an excellent medium to give advice on the different subjects that involve the Police and the Community. If you have a concern you think could be of interest to others, stop me on the street or write to Skate's Beat, c/o the Ottawa Carleton Police, Community Services, 474 Elgin St., Ottawa, Ontario, K2P 2J6.

So until next time...see you on the beat!

### SELECTED CRIME STATISTICS FOR THE GLEBE AREA FOR A FOUR WEEK PERIOD ENDING FEBRUARY 14TH 1996

	Area One	Area Two	Area Three	Area Four
Break Enter Commercial	1	3	0	0
Break Enter Residential	1	0	0	0
Theft over \$1000	0	1	0	0
Theft under \$1000	6	9	7	0
Theft of Motor Vehicle	1	3	2	0



### GLEBE HELPING HANDS

at your service

- ◆ SPRING CLEAN-UP
- ◆ PAINTING
- ◆ YARD MAINTENANCE & GARDEN CARE
- ◆ DELIVERY OF PLANTS AND SUPPLIES
- ◆ SMALL REPAIRS
- ◆ phone: 237-5827      references available

Fine Residential Improvements

The Neighbourhood Specialists

Sandy Hill Construction Ltd.

565-5666

# CAPITAL COLUMN

## Inviting feedback on community survey and clean-up

By  
Councillor  
Jim Watson



Refreshments will be served and the Hopewell School Band will perform under the direction of former Whitton Award winner Allison Woyiwada.

My thanks in advance to all of our sponsors and nominators. A complete list of all winners will be published in the next issue of the *Glebe Report*. Congratulations to these men and women who do so much to make our community a better place.

The ceremony itself will be broadcast on Rogers Community 22 on March 22nd at 9 p.m. and March 24th at noon.

### LIGHTS, CAMERA, ACTION!

Join my colleague Allan Higdon (Alta Vista-Canterbury) and myself every Thursday at 6:30 p.m. on

Rogers Community 22 as we host the TV program "In the City." It's a magazine type show that features some of the interesting people, places and events that make Ottawa a great place to live, visit and work in.

### SPRING CLEANUP COMMITTEE MEMBERS WANTED

I am looking for volunteers who would like to help organize a Community Cleanup in their neighbourhood this spring. I would like to get five or six people to help co-

ordinate the search for volunteers and corporate sponsors who can help defray the cost of bags, etc.

This year I would also like to try and tackle the cleanup of some of the graffiti that appears to be getting worse in the neighbourhood. If you have any thoughts on this and would like to volunteer to help, please e-mail, fax or phone me at the numbers below.

### SURVEY 96

My thanks to all who took the time to fill out my annual survey in last month's *Glebe Report*. If you didn't receive it, but would like to fill one out, please call my office and we'll send you one. Some of the issues covered include the future of Lansdowne Park, front yard/driveway parking, and subsidizing professional sports.

### SAFER COMMUNITIES CONFERENCE

The Crime Prevention Council of Ottawa is hosting a seminar on making communities safer on April 24 and 25 at City Hall. A wide range of topics will be covered. If you would like additional information, please call the Crime Prevention Council at 244-5645.

### CARLETON UNIVERSITY - UNIVERSAL TRANSIT LEVY

Congratulations to the students at Carleton University for supporting

a proposal in a recently held referendum to implement a universal transit levy next school year. This would allow students to be issued with a bus pass in September for \$140 for the 8 months that school is in session. The matter will go before the OC Transpo Commission and if approved it will proceed in September on a one year trial basis. This proposal will save students who currently buy a bus pass over \$200 per year and hopefully will encourage more people to take the bus and not use private vehicles.

### SUPPORT OUR LOCAL BUSINESSES

The economic downturn we find ourselves in is hard on many people including our local merchants who create economic growth and jobs in our community. I encourage residents to "shop our neighbourhood" in an effort to show your support for our local small business people. I've often said "as Bank Street goes, so goes our neighbourhood." A healthy Bank Street means a healthy Glebe.

### CAN I HELP?

Jim Watson 111 Sussex Drive  
Ottawa K1N 5A1 Tel: 244-5367  
Fax: 244-5651 E-mail:  
ad202@freenet.carleton.ca

We have had a particularly hard and long winter, and I for one am looking forward to putting away my overshoes and heavy clothes. I welcome your comments on snow removal issues. You might find the City's Operations Branch fact sheet of commonly asked questions and answers on snow operations useful. Call me at 244-5367 and I'll be pleased to send you one.

### WHITTON AWARDS - EVERYONE IS WELCOME!

Don't forget that Monday March 18 at 7:00 p.m. is the date and time of the fourth annual Whitton Awards ceremony for community volunteers and leaders and everyone is invited to attend to salute your friends and neighbours. The ceremony will take place in Assembly Hall at Lansdowne Park (this is the room at the back of the Civic Centre, just to the right of the Aberdeen Pavilion).

## Poop?

It's your business

### 1. Pick it up.

Use a bag or a shovel. Use a patented poop scoop. But pick up that poop and take it home for disposal.

### 2. Dispose of it.

If you can flush it down the toilet, that's best. BUT DON'T FLUSH DOWN THE BAG! Toilets flow to the sewage treatment plant or septic tanks. Both are equipped to handle this kind of waste.

### SCOOP THAT POOP!

For information regarding enforcement please call 244-5600.



WATER QUALITY  
Starts at Home!



QUALITÉ DE L'EAU  
Ça commence à la maison!

## Les petits cadeaux de Fido?

C'est votre affaire.

### 1. Ramassez-les.

Utilisez un sac ou une pelle ou encore, utilisez une pelle à crottes brevetée. Quoi qu'il en soit, ramassez-les, apportez-les à la maison pour vous en débarrasser.

### 2. La meilleure façon

De vous débarrasser des crottes est de les jeter aux toilettes.

**NE JETEZ PAS LE SAC DANS LES TOILETTES!**

Les toilettes sont reliées aux tuyaux d'égout et à l'usine d'épuration conçue pour traiter ce genre de déchets.

### RAMASSEZ-LES!

Pour obtenir des renseignements sur la mise en oeuvre du programme, veuillez composer le 244-5600.

## Get Ready Ottawa!

The 3rd annual Spring Cleaning the Capital campaign, May 6-12, is on its way!

Once again, the Ottawa community will have a chance to show its civic pride. Help make our city clean and green — start organizing your clean up project!

## Stay tuned!

Information: 244-5444

Spring Cleaning the Capital is a Civic Pride campaign which aims to reduce litter in the City of Ottawa.



## À vos marques, Ottawa!

La troisième Campagne annuelle de nettoyage du printemps de la capitale s'en vient!

Du 6 au 12 mai 1996, la communauté d'Ottawa aura à nouveau la possibilité d'afficher sa fierté civique. Aidez à faire d'Ottawa une ville propre et verte ... et commencez à organiser votre projet de nettoyage!

## Plus de détails suivront!

Renseignements : 244-5444

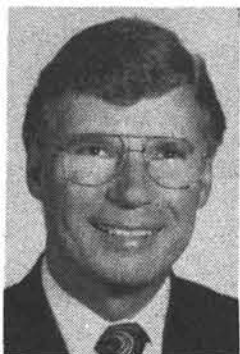
Le Grand ménage de la capitale est une initiative du Programme de fierté civique qui vise à réduire les déchets dans la ville d'Ottawa.

March 8, 1996 *Glebe Report*-9

# NEWS

## Regional Councillor report

By  
Regional  
Councillor  
Brian McGarry



On 13 September 1995, Regional Council mandated our Chief Administrative Officer to undertake a Corporate Review.

The need for this is triggered by external forces which have a major impact on the Region and make it necessary that we identify our core services, redefine our levels of service and delivery mechanisms and review our organizational structure.

Some of the external forces are:

— The federal and provincial governments have determined that deficits are too high and are no longer affordable; the Province is now taking drastic steps to balance their deficit partly through significant reductions in municipal transfers.

— Over the last 20 years, governments have become "everything to everybody"; of government's role is being questioned everywhere with a clear shift away from direct involvement in service delivery.

— The move towards global economies increases competition and compromises our ability to maintain and attract businesses in our Region.

— The move from Industrial Age to Information Age is changing the fabric of society and institutions; emerging computer technologies create both challenges and opportunities.

— Demographic trends show a marked aging of the population in the next decades; an older and increasingly diverse population will have important ramifications in our workplace and in our community.

— The current review of governance in Ontario will result in fewer municipalities among the various levels of government, including the RMOC.

Clearly, these external pressures made it necessary to instigate internal change and reassess our Corporate objectives.

— We recognize that our primary purpose is to serve our taxpayers/clients/customers effectively and efficiently within new funding realities and that "customer service" will be the focus of our efforts in the future.

— We will restructure ourselves to make it easier for our tax-  
March 8, 1996 Glebe Report-10

payer/clients/customers to make use of our services; whenever possible this will take the form of one-stop shops that will regroup services of a similar nature.

— We will formally measure client (internal/external) satisfaction on a regular basis to ensure that we are meeting expectations.

— We will ensure that each function we perform and each service we offer provides real value added to our taxpayers/clients/customers.

Ottawa-Carleton and the Outaouais must adapt to the challenges before us. There is no need for despair, providing strong leadership works with the wider community. We can accentuate the positive and build upon the strengths already within the National Capital Region:

1. We are the fourth largest urban area in Canada: The National Capital Region has a population of 1,054,000.

2. We have high average per capita income: Estimated at \$23,100, the fourth highest in Canada.

3. We are strategically located: The National Capital Region is less than an hour's drive from New York State, straddles Ontario and Quebec, and is central to many world markets.

4. Our current workforce numbers 509,200, of which 34% is bilingual. The region has experienced a 25% increase in its workforce since 1984.

5. The region's economy has diversified significantly since 1981 from 32% of jobs in the federal public service to only 19% today.

6. We have a highly skilled local labour force: 32% are university educated (the Canadian average is 22%). There are over 70 elementary and high schools in this Region, six colleges and universities, and numerous professional business schools.

7. The Region is home to many of Canada's best museums, cultural facilities, waterways, open green space, and recreational facilities.

It is one of the most enviable regions in North America. The next 3 to 5 years will surely shape our destiny for decades to come.

(With notes from the RMOC pamphlet "Corporate Review" and the Ottawa Carleton Economic Development Corporation's booklet entitled "Economic Profile." For further information Phone 560-1224).

Brian McGarry/Capital Ward/E  
Mail: mcgarrybr@rmoc.on.ca

### Top 10 Reasons For Visiting

## BUCKLANDS

FINE CLOTHING

10. Complimentary basic alterations with all regular priced merchandise.
9. Free parking.
8. 50% off section for men and women.
7. Gift wrapping for C.H.E.O.
6. Over 20 designer men's and women's clothing lines to choose from.
5. Ellen Tracy Accessories including hosiery and belts.
4. Nautica Accessories for men including fragrance and watches.
3. Tommy Hilfiger underwear collection.
2. New additions to store - Emanuel, Joseph Abboud, A-Line and Laundry dresses.
1. Friendly staff where customer service is always number one.

**722 BANK STREET**  
AT FIRST AVENUE

Free Parking

Open Fridays until 9:00 p.m.

238-2020

## Tap dancing Sam March 23, 24

What has dancing feet, Canada's foremost tap dancer, an involving and heartwarming story, a chance for the children to participate and lots of familiar songs? *Tap Dancing Sam*— the March Children's Festival show. The show will be presented at the Canadian Museum of Nature (McLeod and Metcalfe) on Saturday and Sunday, March 23 and 24 at 11:30 am and 2:00 pm each day. The show is geared for four to ten-year olds. Tickets are \$7 and include admission to the museum and the new shark exhibit.

*Tap Dancing Sam* is the story of ten year old Patrick who is torn between the expectations of his father, who wants him to be a football player, and his grandfather, a former vaudeville star, who wants to encourage Patrick's gift for dancing.

Patrick's problem is solved in a creative and amusing manner.

This dance theatre is written and performed by William Orlowski, who plays all three parts—Sam, the old vaudeville star, the football loving father and ten year old Patrick.

Orlowski, who has been seen in his *Jennifer's Dream* and *Oliver Button is a Sissy* at the Festival, co-founded the National Tap Dance Company of Canada, created special choreography for Ginger Rogers in *The Palace Presents* and for Liza Minnelli in *Stepping Out*, was most recently seen in Tap Dance Concerto with the Toronto Symphony and in *Lady, Be Good* at the Shaw Festival.

Call 728-5863 for more information.

Help make tomorrow  
a better place.  
Support families in  
Africa and Asia.

Please make your pledge to USC  
by calling: 1-800-5656 USC and  
234-9335 for Ottawa calls.

USC  
Canada

705-56 Sparks Street  
Ottawa K1P 5B1  
(613) 234-6827  
FAX (613) 234-6842  
uscana@web.apc.org

## OBE trustee report

By  
OBE  
Trustee  
Lynn  
Graham



I am full of admiration for our principals and teachers who continue to deliver quality education to Ottawa Board of Education students in spite of the many difficulties and uncertainties in education today. My classroom visits are most reassuring. This week I look forward to reading to both primary and junior children as part of the "Mutchmor Reads More 1996."

### THE SWEENEY REPORT

February 16 saw the release of the final report of the Ontario School Board Reduction Task Force, called the Sweeney Report after its Chair John Sweeney. Key among the recommendations is the amalgamation of the OBE and the Carleton Board of Education. Over the past three years, the OBE has had to discuss amalgamation twice, once with the report of fact finder Brian Bourns in October 1993 and now with the Sweeney interim and final reports. In the coming months, the OBE will continue to work with students, parents, staff and ratepayers to review the analysis in the final report and determine its impact on the classroom and on ratepayers.

Mr. John Snobelen, the Minister of Education and Training, has requested local consultation on the proposed amalgamations across the province. All MPPs are to carry this out and report back by May 30, 1996, so that he can make a decision before the end of the summer. However, recent announcements by members of the Harris Government seem to suggest that the whole question of school board amalgamation may be put on hold, perhaps indefinitely. Financial "reform" can take place without school board amalgamations!

In the area of finances, the Sweeney Report recommends that the government undertake province-wide pooling of commercial and industrial assessment. This change, combined with others, is reflected in a table in the report which suggests a total decrease in annual expenditures of \$50 million for the OBE i.e. 18% of our budget. Such a reduction would obviously have a major impact on our education system. We will have to wait and see what the Harris Government does with this and all other recommendations in the Sweeney Report.

### THE 1996 OBE BUDGET

The OBE fiscal year runs from January 1 to December 31, and the budget is normally finalized at the end of March i.e. three months into the financial year. At the OBE we have had to begin budget deliberations without knowing how provincial cutbacks in education for 1996 will affect this current budget. In the November Economic Statement, the Conservatives announced a \$400 million reduction in education for school boards in 1996, but specifics have not been released. We are, therefore, faced with the daunting task of preparing a budget and setting a mill rate without knowing all the financial parameters.

Trustees have been presented with a preliminary budget which simply carries forward all programs and services from 1995 into 1996 i.e. a status quo budget. Expenditures, set at \$283 million, exceed revenues by \$13.9 million. With \$6.4 million in reserve funds, this shortfall can be substantially reduced, to \$7.5 million. How are we going to address this shortage? To what extent will expected provincial funding announcements exacerbate the situation?

During upcoming budget meetings, both in the community and in the boardroom, we must examine all areas of discretionary spending. Some of the larger items on this list of programs and services are: adult education, English as a second language (ESL), capital expenditures, continuing education, curriculum services, junior kindergarten, special education, summer school, and transportation.

On February 5, Trustees approved my motion which provides a framework for the assessment of budget items. As far as possible, this framework will be used to examine items in light of their relevance to the mission of the OBE, the primary client group of the OBE, the learning outcomes for the students and their cost-effectiveness. Its use should avoid some of the ad hocery which has plagued OBE budget discussions in the past.

On February 19 Trustees passed a motion at Management Committee (yet to be ratified by the board) that administration develop various options to reach a zero per cent tax increase in 1996. I am committed to keeping taxes as low as possible and ensuring that we realize maximum benefit for each dollar spent: nonetheless, I did not support this motion because my overriding priority is a viable public education system. Before agreeing on a level of taxation, I must first be assured we are maintaining the essentials and preserving public education as

a cornerstone of our democratic way of life.

Please call OBE Board Services at 239-2490 for copies of budget documents. For information on budget meetings, call the OBE Communications Office at 239-2312. I would greatly appreciate hearing your

views on the 1996 budget and on any other OBE matters.

### FOR INFORMATION

Lynn Graham Trustee, OBE Zone 9  
c/o 330 Gilmour Street Ottawa K2P  
0P9 Tel. 730-3366 Fax 730-3589

Internet Address:  
lgraham@obe.edu.on.ca

If you think  
you're paying  
too little tax,  
stop reading  
now.

Good. You're normal. Don't get me wrong, I believe in paying our fair share to support this great land of ours. But not a penny more. As one of Canada's leading financial planning companies, we've always believed that a solid tax strategy is an important part of any financial plan. So that's why we do comprehensive tax planning for our clients. Like you. I'll come to your home or office

to do it, whichever is more convenient for you. If you like, I can even arrange to have your return completed, too. Because with me, you're worth more. Call me today and I'll prove it.



Muriel Flade  
M.A.  
742-8018

Investors  
Group  
For The Wealthy Alone



Carleton  
UNIVERSITY

School of Business

CREWW

CENTRE FOR RESEARCH  
AND EDUCATION ON WOMEN AND WORK

Presents an  
**Information Session**  
on the  
**Management Development Program  
for Women**

When: Tues., March 26 or Mon., April 29, 1996  
at 7:00 pm

Where: Senate Lounge, 6th Floor, Robertson Hall  
Carleton University Campus

The Management Development Program for Women is a program designed for highly motivated women who wish to develop and practice their management skills in a supportive environment. Classes are monthly on Thursday, Friday and Saturday. Business Strategy, Marketing, Communications, Management and Organizational Behaviour, Human Resource Management, Accounting, Business Writing, Information Systems, Program Evaluation and Project Management are among the areas studied. For details, contact:

Centre for Research and Education on Women and Work

School of Business, Carleton University

Telephone: (613) 520-2650

Fax: (613) 520-2652

Silver  
Scissors

Hair Studio

236-6408

851 Bank St. (at Fifth Ave.)

# SPORT

## Glebe Little League registration

Mark the week of March 18 on your calendars for Glebe Little League spring baseball and softball registration.

Returning players can register early and first on Monday, March 18, from 7-9 p.m. at Mutchmor School, 185 Fifth Avenue (use the Fourth Avenue door). Open registration will take place March 19 and 21 from 7-9 p.m. at Mutchmor School (again, use the Fourth Avenue door).

Glebe Little League offers organized baseball and softball to boys and girls aged 7-18 living in Centretown, Glebe, old Ottawa South, Ottawa East, Sandy Hill and Lower-town. Teams play at Brantwood Park in Ottawa East, Windsor and Brewer Parks in old Ottawa South, and Lansdowne Park in the Glebe.

Programs are offered for all ages - Rookie Ball (7-8), Little League (9-12), Girls Softball (9-16), Junior (13), Senior (14-15) and Big League (16-18). The child's age as of July 31, 1996 determines the level at which he or she plays. The spring season runs from April 29 to the end of June.

The League is hoping more girls register this year because the Girls Softball program is expanding to include girls up to age 16. This Division will also have more playing time available at Brantwood Park.

Kathryn McCauley has played softball for several years and encourages more girls to come out and register. "Girls softball is competitive enough but not overly competitive. Anyone can enjoy it; it's not just the first line that gets to play. Everyone plays and everyone enjoys it. And you meet so many people," she adds.

Long-time baseball player James Diak has a similar view. "Playing ball with Glebe Little League is a good opportunity to meet your friends and to get to know new people. It's also a good opportunity to have fun and to stay out of trouble."

For more details on registration, call 567-7347. If you want information on coaching or umpiring, call 233-2148.

## GLEBE NEIGHBOURHOOD ACTIVITIES GROUP

### Recreational Soccer

#### REGISTRATION INFORMATION

Registration for GNAG recreational soccer will be on

**Monday**  
April 1  
7:00-8:00 p.m.

in the Glebe Community Centre Basement

Cost is \$20 per player. Financial assistance is available through the Community Centre

Late registration for remaining spaces will be accepted until Friday, April 12, at the Community Centre front desk.

GNAG Soccer is a fun-league, open to girls and boys from junior kindergarten to grade 8

In GNAG Soccer all coaching, refereeing, and other tasks are done by Glebe parents. Please volunteer at registration time to help your child's team

Fridge magnet goes here!



Anyone willing to help administer GNAG Soccer please contact Bruce Akins at 234-0069

#### Age-group information

Jr & Sr Kindergarten  
Tues & Thurs, 6:30-7:45 p.m.  
Glebe Collegiate Field  
May 2 - June 13

Grades 1 & 2  
Mon & Wed, 6:30-8:00 p.m.  
Glebe Collegiate Field  
May 1 - June 17

Grades 3 & 4  
Tues & Thurs, 6:30 - 8:00 p.m.  
Chamberlain Field  
(Lyon Street at Chamberlain)  
April 30 - June 13

Grades 5 through 8  
Mon & Wed, 6:30-8:00 p.m.  
Chamberlain Field  
(Lyon Street at Chamberlain)  
April 29 - June 17

## OPEN HOUSE

Saturday, March 16, 1996

10:00 am to 5:00 pm.



## M O M E N T U M A T H L E T I C S

Discover How Much Fun a Healthy Lifestyle Can Be!

### St. Patrick's Day Special

#### ONE DAY ONLY!

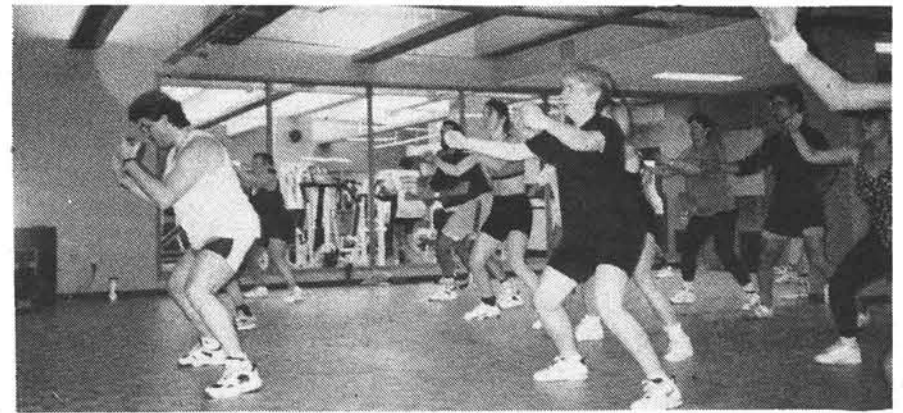
"Pick up your MOMENTUM DOLLARS today to save on memberships!!"

#### Come & Enjoy

Aerobics Class  
10:30 - 11:45 am.

Special "Hip Hop Funk" Class  
by Jeanette Jenkins 2:00 - 3:00 pm.

Tour of Facility, Weight Room Orientation, and Refreshments  
10:00 am - 4:00 pm.



Try our **Recreational Ballet for Adults**  
Monday and Thursday 7:30 to 8:45 pm.  
(First class is complimentary, everyone is welcome.)

#### NEW RATES FOR 1996

- MORE OPTIONS  
- MORE FITNESS PACKAGES  
You can now invest your money more wisely, and more efficiently than ever!

858 Bank St. at 5th Ave.  
"Lower Level"

2 3 7 - 4 7 4 7

Hours of Operations  
Monday to Friday 7:00 am. to 9:00 pm.  
Saturday and Sunday 9:00 am. to 5:00 pm.

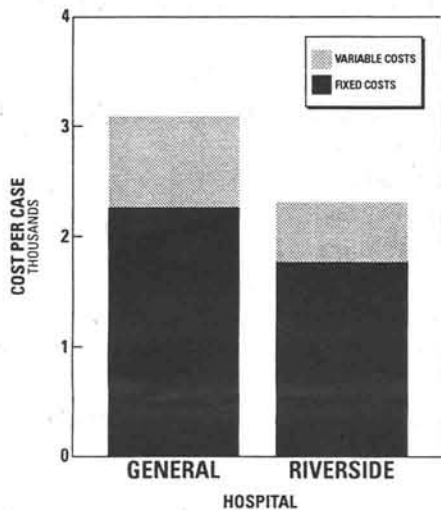


THE RIVERSIDE HOSPITAL OF OTTAWA

# “More Bang For Your Health Care Buck”

## Closing The Riverside Hospital Of Ottawa Just Doesn't Make Sense.

COMPARISON OF COST PER CASE  
GENERAL VS RIVERSIDE HOSPITALS



When Ontario's Health Minister Jim Wilson talks about health care in the province he's talking about The Riverside Hospital of Ottawa. Mr. Wilson says Ontario taxpayers deserve "more bang for the health care buck"

That's exactly what Ontario taxpayers get from Ottawa's largest commu-

nity hospital. Rated in the top 10 in its peer group in the province in terms of efficiency and cost-effectiveness, the hospital has consistently operated to ensure that it is in a surplus, rather than a deficit position at the end of each fiscal year.

### SPENDING SMARTER

To use the health minister's own words, the Riverside "spends smarter and gets better value."

Did you know that 80 per cent of all procedures performed at the General Hospital are also performed at the Riverside? Procedures such as vaginal births, C-sections, appendectomies, total hip and knee replacement, gall bladder removal, splenectomy, colnectomy and

hernia repair. The big difference is that it costs about one-third less to have these procedures performed at The Riverside than the General. That's a big saving to Ontario taxpayers. And there's no difference in outcomes.

### QUALITY RECOGNIZED

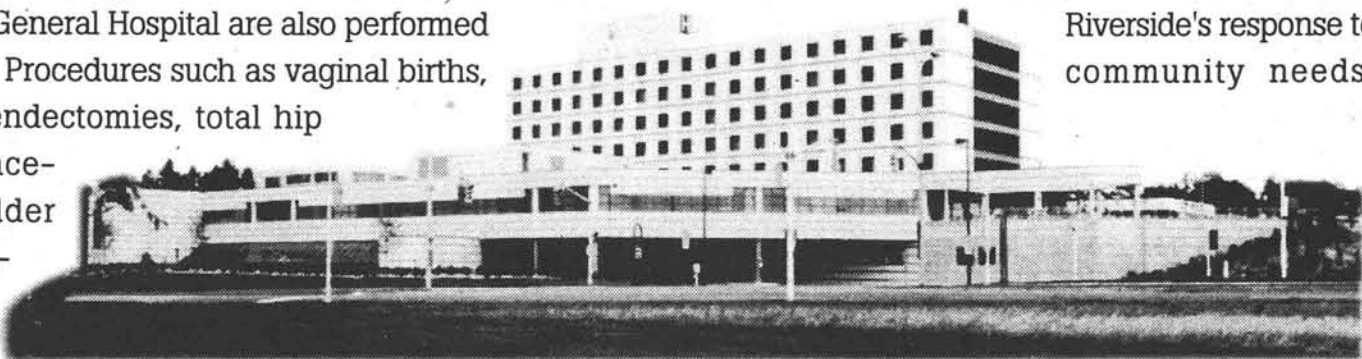
Health Minister Wilson is keen on quality. He says a premium should be placed on quality and continuous improvement.

The Riverside's recent four-year Accreditation With Distinction Award from the Canadian Council on Health Services Accreditation is a clear indication of the priority the hospital places on quality and continuous improvement. There are only 23 health care institutions with this level of accreditation in Canada.

### INNOVATIVE AND PROGRESSIVE

Mr. Wilson also supports innovation – especially when it comes to new methods of delivering service and providing optimal patient care.

Innovation is an on-going process at the institution that has come to be known as Ottawa's "progressive community hospital." New surgical techniques, new anesthetics and better methods of pain control optimize patient care – The Riverside's response to community needs.



### YOUR SUPPORT IS NEEDED. MAKE YOUR FEELINGS KNOWN!

HON. NORM STERLING, MPP, 1143A Mill Street, Manotick, K4M 1A5. Phone 692-2403. Fax 692-0968.  
GARRY GUZZO, MPP, 885 Meadowlands Drive, Ottawa, K2C 3N2. Phone 727-2657. Fax 224-3306.  
PETER CLARK, Regional Chairman, 111 Lisgar Street, Ottawa, K2P 2L7. Phone 560-2068. Fax 560-6010.

# NEWS

## Glebe Questions

### The barber's mirror

By  
Clyde  
Sanger



Barbara Westwick, of Renfrew Avenue, managed to think up two questions for this column while she was having her hair cut. The first question I refused to explore. It was, "What famous people have lived on Renfrew, besides Charlotte Whitton?" Well, you wouldn't have fallen into that trap, would you? Every other avenue would have said, "We have more famous people than Renfrew!" and meanwhile all the people in Renfrew who hadn't been mentioned as famous would have been mightily offended.

So we let that question lie on the floor and, on further reflection, Barbara produced this other one: "What have been the main trends in the Glebe over the last 13 years?" She chose 13 because that's how long her family has all lived on Renfrew, although her husband Vincent grew up here. She agreed to lengthen the time period to 25 years, which is a bit more measurable and roughly the number of years Penny and I have lived here.

To get a perspective on trends, I went first to two people who deserve the title of "Usually Reliable sources," Ted Britton and Elaine Marlin.

Ted, standing among his piles of newspapers and magazines from far and near, was his usual positive (and reliable) self. "People in the Glebe today are better read and less conservative," he said. "They are definitely more cosmopolitan." He had himself just returned from a trip to Britain.

I tried on him a comment that Ilse Kyssa (who has been wintering in Austria) threw out some months ago, when she said that there are no 'artisans' like shoe repairers left in the Glebe. I think she's right: the nearest shoe repairer I know is on the far side of Gladstone.

Ted agreed with Ilse. He said: "Well, the rents are ten times higher than when my father Lionel ran the store 20 years ago." He added that, while he had enjoyed growing up in the Glebe, "I like it better now; there's more of a mixture."

Elaine Marlin gave a different cut on the question. She and Randal came to a house on Regent Street 25 years ago, and soon began to think that the community might not last much longer. Was that, I asked, because of the City's traffic scheme to put an east-west arterial road along Carling? "No, earlier than that," she said. "The threat was from the plan to expropriate all the land from Lansdowne to Fifth, in order to enlarge Lansdowne Park. We were saved at the last minute by the Holmwood group: it was almost through council when this group jumped forward!" She credits people like Eric Rusmisl, Frances Bryce, Pat Zolf and Michael Pine with actions that not only saved the community but gave it the confidence it has today.

The obvious trend in 25 years, Elaine points out, is the fixing up of all the homes and schools. "The Glebe was down at heel, slummy in a nice way. There was more of a mix of incomes. Several welfare workers who had clients in the area used to drop in for a cup of tea. And the schools, which were pretty ratty-tatty even 13 years ago, have all been fixed up heritage-perfect. The level of affluence is way up. Bank Street itself is hardly recognizable. Nothing like so many things to buy then, but at least they were affordable!"

Lastly, the opinions of Eileen Elliott and her daughter Nancy Ingram. We talked in the Glebe Centre while waiting for the visit of Barbara Ann Scott. (The sheet about Barbara Ann that was placed at every table showed her not only leaping over Swiss mountains as the Olympic champion of 1948 but told us she was chosen "One of the Six Most Wholesome Women of 1947," a very suitable visitor to the Glebe.) Mrs. Elliott remembered how, when she lived on Cleary in the 1940s, she used to wheel her kids over to where the centre now is (and where she has lived for 10 years) "to talk to the old men, and there were trees all round." Nancy, who lives on Holmwood, is a weaver and says what has given cement to the community is — the Glebe Community Centre, with its craft fairs, its school and every other activity (not forgetting the *Glebe Report* office).

*Editor's Note: Though Clyde is not available to correct his column, I'm sure he would want to know that we do now have a shoe repairer in our community. The Glebe Cobbler is located at the back of Wringer's at 151 Second Avenue.*

March 8, 1996 Glebe Report-14

FOR YOUR ONE STOP SHOPPING IN THE GLEBE

## INNIS PHARMACY

769 BANK ST. (AT SECOND AVENUE)

TEL.: 235-4377 FAX.: 235-1460

PICKUP AND DELIVERY SERVICE

Remember March is "**Poison Prevention**" month, in Ottawa the poison control center number is 737-1100, do you have it near your phone? Pick up your free copy of the March Family Healthcare newsletter, it's packed with valuable savings and sensible health advice for you.

**OPTI-FREE**  
Bonus Size 470 ml \$7.99

**TYLENOL** Tabs 100's \$4.99

**POLYSPORIN OINTMENT OR**  
**CREME** 15gm \$3.79

**BAND-AID PLASTIC**  
Bonus 50 + 10 \$2.69

Cheer up!  
The spring sun is coming  
**OMBRELLE** Lotion  
SPF 15 \$9.49

**ADVIL** Tabs 24's \$2.99

**CLEAR EYES** 15 mls \$2.97

**WAMPOLE** Vitamin C Chewable  
500 mg 100's \$4.39



**PHOTO FINISHING**  
24's \$8.99,  
2nd set \$2.99

**NIZORAL** Shampoo  
100ml \$8.59

Hop in and check out our beautiful Gordon Fraser Easter Cards, there is sure to be the right one for your special bunny in our expanded selection.

• These prices are in effect until the end of the month •

SINCE THE TURN OF THE CENTURY THIS HAS BEEN  
A PHARMACY LOCATION

OPEN:  
MON-THURS 8:30-6:00 PM  
FRIDAY 8:30-7:00 PM  
SATURDAY 9:00-6:00 PM  
CLOSED SUNDAY TO ALLOW STAFF FAMILY TIME



WE ACCEPT:  
VISA  
MASTERCARD  
DEBIT CARDS  
& MAJOR DRUG PLANS

Sharpening Service\*

# SPECIALS

✎ KNIVES ✎ SKATES  
 ✎ SCISSORS ✎ LAWNMOWERS  
 ✎ AXES ✎ & BLADES  
 ✎ TOOLS

## 20% OFF

ALL  
SHARPENING  
UNTIL  
MARCH 30/96

\* SHARPENING IS DONE OFF SITE BY  
JC'S MOBILE SHARPENING (ASK FOR DETAILS)



**CAPITAL HOME HARDWARE**

736 Bank St. (at Second Ave.)

234-6353



# Spring Programmes 1996



*A wide variety of quality recreational courses  
and workshops for all ages!*



Centre communautaire du Glebe Community Center

690 Lyon St. South  
Ottawa, Ontario K1S 3Z9  
Tel: 564-1058



City of Ottawa

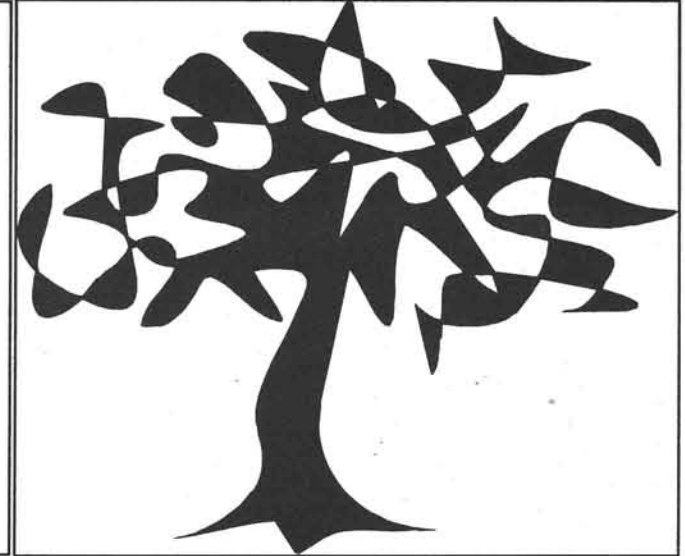
## Glebe Neighbourhood Activities Group

The Glebe Community Center is operated by the Corporation of the City of Ottawa, Department of Community Services in partnership with the Glebe Neighbourhood Activities Group (G.N.A.G.)

The focus of the Community Center is to provide quality recreational programming for all ages groups. The Center also provides space for meetings and social functions.

The executive of G.N.A.G. is comprised of a dedicated group of community volunteers, whose interests lie in providing quality recreational services for their community. Members actively participate in programme planning, registration, flyer production, publicity and promotion, special events and staffing.

Want to help? call the Center at 564-1058 for more information.



## **R**egistration

Saturday, March 23, 1996  
10:00 a.m. - 2:00 p.m.  
Glebe Community Center  
690 Lyon Street South

\* Registration continues in the office from March 25 and ongoing until courses are filled or when courses begin. We are open from Monday to Thursday, 9:00 a.m. - 9:00 p.m. and Fridays from 9:00 a.m. - 6:00 p.m.

\* We accept cash or personal cheques. Please make cheques payable to "G.N.A.G." (Glebe Neighbourhood Activities Group) **NOTE: One cheque per person per course. Single cheques for multiple courses will not be accepted.**

\* A 10% discount is given when members of a family register for three or more courses (After-4, P.D. Days and workshops are excluded).

\* Senior Citizens receive a 10% discount.

\* Financial help is available. Please ask at registration.

\* All courses begin the week of April 9, 1996 and are normally 8 weeks in length unless otherwise indicated.

\* All courses are held at the Glebe Community Centre unless otherwise indicated.

\* Further information about refunds, cancellations, and financial help will be available at registration.

## **I**nscription

Le samedi, 23 mars 1996  
10 h à 15 h  
au Centre communautaire du Glebe,  
690, rue Lyon sud

\* L'inscription se poursuit au bureau administratif à partir du 25 mars et jusqu'à ce que les cours soient complets. Le bureau est ouvert de 9 h à 21 h du lundi au jeudi et le vendredi de 9 h à 18 h.

\* Les chèques doivent être faits à l'ordre de G.N.A.G. (Glebe Neighbourhood Activities Group). Nous acceptons l'argent comptant. **N.B. Un chèque par personne par cours. Un chèque unique pour plusieurs cours ne sera pas accepté.**

\* Une réduction de 10% sera accordée aux membres des familles qui s'inscrivent à trois cours ou plus. (L'après-quatze, les journées pédagogiques et les ateliers sont exclus).

\* Les aînés ont droit à une réduction de 10%.

\* L'aide financière est disponible. S.v.p., demandez à l'inscription.

\* Les cours débutent le 9 avril 1996 à moins d'avis contraire. Tous les programmes sont offerts pour une durée de 8 semaines à moins d'avis contraire.

\* À moins d'avis contraire, tous les cours se donnent au Centre communautaire du Glebe.

\* De plus amples renseignements sur les remboursements, annulations et subventions seront disponibles à l'inscription.

*If you have a programme idea or require further information, please call 564-1058*



## Preschool Programmes

### CHILDREN & ADULT PLAYGROUP (Upstairs and Downstairs Club)

Children will enjoy an exciting morning of active play, crafty creations, music, and snack. Adult participation is required. Newborn siblings are welcome. Individual day spaces are not available. Occasional snack duty is required. For children 1 year and walking to 3 years.

Tuesdays and Thursdays  
9:15 a.m. - 11:15 a.m. (downstairs club)  
9:30 a.m. - 11:30 a.m. (upstairs club)  
April 9 - June 13  
\$70.00 per child

**NOTE:** Due to limited space, registrants may register for only one additional non-family member for this course.

### INDOOR PLAYGROUND

Parents, caregivers, and children (ages 0 - 5) can partake in this "drop-in" playground that uses a variety of different toys. There is no instructor for this programme; parents or caregivers are responsible for setting up and putting away all equipment. Playground will take place in the Basement Hall.

Mondays, Wednesdays, and Fridays  
10:45 a.m. - Noon  
April 10 - June 14 (excluding April 8 and May 20)  
\$10 per Adult or \$1.00 per drop-in

### TIME OUT WITH BABIES

For parents and caregivers and newborn babies. This is an opportunity to share common experiences with each other. This free programme is facilitated by a registered nurse. Discussion topics may include: nutrition, nursing your baby, health issues, development etc. For ages 0 - 12 months.

Fridays 10:30 a.m. - 11:30 a.m.  
April 12 - June 14  
FREE!

### MUSIC AND MOVEMENT

A lively session with a blend of singing, story telling, bouncing games, rhythm, dancing, and hands-ons experience with instruments. Adult participation is required.

2.5 years to 5 years 9:30 a.m. - 10:15 a.m.  
13 mos to 2.5 years 10:30 a.m. - 11:15 a.m.  
Mondays April 15 - June 10 (excluding May 20)  
\$37.00

### CREATIVE MOVEMENT

This class introduces preschoolers to dance while focusing on music, rhythm and ballet. There will be an informal dance performance at the end of the session. For 3 - 5 years.

Saturdays 9:30 a.m. - 10:15 a.m.  
April 13 - June 1  
\$36.00

### JAZZ DANCE

This class is designed for children with a little experience in dance or who have previously taken Creative Movement. Dance steps and a simple routine will be emphasized. There will be an informal dance performance at the end of the session. For 4 - 6 years.

Saturdays 10:15 a.m. - 11:00 a.m.  
April 13 - June 1  
\$36.00

### COME PLAY WITH NINA

Join Glebe Community Center's own "Mother Goose" for one or all of our exciting specialized programmes. With Nina's expertise, your child will gain excellent skills while having fun!  
For ages 3 - 5 years.

✓ Kids In The Kitchen	Tues.	1:30 - 2:30 p.m.	April 9 - June 11	\$50.00
✓ Kinder Gym	Wed.	1:30 - 2:15 p.m.	April 10 - June 12	\$40.00
✓ Kinder Carpentry	Thurs.	1:30 - 2:30 p.m.	April 11 - June 13	\$63.00
✓ Messy Creations	Fri.	1:30 - 2:30 p.m.	April 12 - June 14	\$41.00

## Children's Programmes

### CHILDREN'S POTTERY

Be artistic and creative while learning basic pottery skills.

6 - 9 years Mondays 4:00 p.m. - 5:30 p.m.  
April 15 - June 10 (excluding May 20)  
\$60.00 (includes all materials) or  
\$30.00 (if registered in After 4)

6 - 10 years Saturdays 9:30 a.m. - 11:00 a.m.  
April 13 - June 1  
\$60.00 (includes all materials)

9 - 12 years Thursdays 4:00 p.m. - 5:30 p.m.  
April 11 - May 30  
\$60.00 (includes all materials) or  
\$30.00 (if registered in After 4)

### COOKING AROUND THE WORLD

We will learn how to make and eat delicious foods from various countries around the world. Children will be given a brief intro to each country, be shown its location in the world and see photographs from that particular country. Parents are invited to the final class to eat a wonderful meal prepared by their children. For 6 - 12 years.

Mondays 4:00 p.m. - 5:00 p.m.  
April 15 - June 10 (excluding May 20)  
\$50.00 (includes all supplies) or  
\$30.00 (if registered in After 4)

### CHILDREN'S CARPENTRY

An introduction to a variety of tools and their uses. Students will make their own projects which will be creative and challenging. Safety rules and procedures are stressed.

Fridays April 12 - May 31  
6 - 12 years 4:00 p.m. - 5:00 p.m.  
\$56.00 (includes all materials) or  
\$30.00 (if registered in After 4)

### For HomeSchoolers

Mondays May 6 - June 24 (excluding May 20)  
8 - 11 years 12:30 p.m. - 2:00 p.m.  
11 - 16 years 2:00 p.m. - 4:00 p.m.  
\$35.00 (does not include materials)

### JAZZ DANCE

An introduction to the basics of jazz dancing. A chance to improve posture and rhythm while learning a simple routine.

4 - 6 years Saturdays 10:15 a.m. - 11:00 a.m.  
April 13 - June 1  
6 - 9 years Thursdays 6:30 p.m. - 7:30 p.m.  
10 - 13 years Thursdays 7:30 p.m. - 8:30 p.m.  
April 11 - May 30

**All classes are \$36.00**

### BEGINNER VIOLIN

This class will allow the beginner student to discover his or her interest and artistic talent the fun way. Students will learn how to read and play elementary music. Instruments will be provided for these classes. Please note: **Beginner 2** violin is for children who have previously attended last session's violin class or have experience in beginner violin. For 5 - 7 years.

**Beginner:** Tuesdays 4:15 p.m. - 5:00 p.m.  
**Beginner 2:** Tuesdays 5:00 p.m. - 5:45 p.m.  
April 9 - May 28  
\$62.00 or  
\$30.00 (if registered in After 4)

### FAMILY TAI KWON DO

A Korean martial art designed for self defence. Founder: General Choi Hi. Instruction by second degree black belt, Peter Williams. For ages 6 years and up.

Tuesdays and Thursdays  
April 2 - June 20  
White Belts (beginners) 6:00 p.m. - 7:00 p.m.  
Coloured belts (Int. - Adv.) 7:00 p.m. - 8:00 p.m.  
\$60.00 (Childrens)  
\$65.00 (14 years +)

# Youth Programmes

## OPEN GYM (DROP-IN)

Mutchmor is the place and you choose the game!

10 - 14 years Thursdays 7:00 p.m. - 8:30 p.m.  
15 - 18 years Thursdays 8:30 p.m. - 10:00 p.m.  
Mutchmor Public School Gym  
\$1.00 each drop-in

## MONDAY NIGHT BASKETBALL (DROP-IN)

Drop in for an evening of basketball at First Ave. Gym! For ages 15 - 18 years.

Mondays 7:00p.m. - 10:00 p.m.  
First Ave. Public School Gym  
\$1.00 each drop-in

## BABYSITTER TRAINING COURSE

Designed by the Canada Safety Council, this course covers babysitting skills, responsibilities, and emergency situations. Participants also complete a volunteer babysitting placement. For ages 12 years and up.

Mondays 6:00 p.m. - 7:00 p.m.  
or 7:00 p.m. - 8:00 p.m.  
April 15, - June 10 (excluding May 20)  
\$35.00

## YOUTH POTTERY

Be artistic and creative while learning the basics of pottery. For ages 12 - 16 years.

Saturday 11:00 a.m. - 12:30 p.m.  
April 13 - June 1  
\$60.00 (includes all materials)

## YOUTH DANCES

11 - 14 years  
Mark these dates on your  
calendar,  
you don't want to miss it!  
March 8, April 12, May 10,  
and June 14  
7:00 p.m. - 10:30 p.m.  
\$3.00 at the door

## THE GRIMACING NUN CAFÉ

Come to this popular "Youth cafe" in the basement of the Glebe Community Centre. This is your own "Coffee House" to meet with your friends, meet new friends, listen to music, enjoy a cup of coffee and a dessert. Separate entrance through the playground on Lyon St. Open Friday nights (except when there is a Youth Dance - 2nd. Friday of every month) from 7:00 p.m. 'till midnight.

## Workshops For All Ages

### STREET PROOF OUR CHILDREN

In this highly participatory workshop, many scenarios will be covered outlining potentially dangerous situations ie. How to avoid becoming a victim; What is verbal abuse and how to respond; How to respond when an acquaintance acts inappropriately; How to respond when a member of your intimate circle acts inappropriately; peer pressure and the influence of drugs. Don't miss out on this practical and essential workshop! For ages 6 - 12 years.

Saturday, May 4 1:00 p.m. - 2:30 p.m.  
\$12.00

### SELF PROTECTION FOR WOMEN

This class is designed by a team of professionals who will teach participants the approach needed to efficiently and effectively protect themselves. No recertification or follow-up practice is required! You are completely trained after this course. For ages 12 years +.

Saturday, April 13 10:00 a.m. - 1:00 p.m.  
\$41.00

### LEARN TO JUGGLE

Forget computer literacy. Learn to juggle, the skill of the '90s. This workshop will teach the basic 3-ball cascade, cover a few tricks, and show the secrets of doing 4 (maybe 5). Three beanbags supplied. For 9 - 12 years.

Saturday, April 13 10:00 a.m. - Noon  
\$10.00 (new jugglers)  
FREE (returnees)

### ROCK CLIMBING

Join us for a fun and exciting day of rock climbing. Experience is not necessary, we'll show you the ropes! Then we'll pack a lunch and car pool up to the Gatineaus for a full day of adventure. Don't worry, SAFETY IS # 1 with us! This workshop is taught by highly trained professionals. For 16 years and up.

Saturday, May 25 8:00 a.m. - 4:30 p.m.  
Mandatory pre-meeting Wed., May 22 7:00-10:00 p.m.  
\$75.00 (includes G.S.T)

### SURF THE NET-Beginner Course

New to computers? A little nervous? Wondering what all the internet fuss is about? In three hours, you will be visiting sites all over the world! For adults.

Location: Carleton University P.D. Centre  
Wednesday, April 10 6:30 p.m. - 9:30 p.m.  
\*subject to room availability- class size limited\*  
\$52.00 (includes a 30-page manual and G.S.T.)

### INTERMEDIATE INTERNET

Not using your PC to its full potential? Want to check out the internet? In this hands-on workshop, you will be introduced to e-mail, telenetting, Netscape Navigator, search engines and cool sites, then you will be given time to explore your own areas of interest. Some experience with windows helpful. For adults.

Location: Carleton University P.D. Centre  
Wednesday, April 17 6:30 p.m. - 9:30 p.m.  
\*subject to room availability- class size limited\*  
\$52.00 (includes a 30-page manual and G.S.T.)

### BIKE MAINTENANCE

Offered by qualified technicians from the "Bike Stop", this is a workshop in basic bicycle maintenance. Discussion will include simple maintenance you can do at home, ways to upgrade and improve your bicycle and its accessories, and bicycle safety. For adults.

Monday, April 22 7:00 p.m. - 8:30 p.m.  
FREE!  
Call 564-1058 to register.

### LEARN TO VERMI COMPOST

What's a Vermi compost? It's an indoor compost with red worms. Come to our workshop which will cover owning and operating a vermi compost, set up of bin, maintenance and feeding, harvesting and useful tips!

Wednesday May 29 7:00 p.m. - 10:00 p.m.  
FREE!  
Call 564-1058 to register.

### DRY YOUR OWN FOOD FOR CAMPING, HIKING, OR SNACKING

This is an excellent alternative to processed packaged food. In this workshop, you will learn how to make beef, smoked salmon, chicken jerky, dried fruits and vegetables using either your oven or a home style food drier. For Adults.

Monday, April 29 7:00 p.m. - 10:00 p.m.  
\$21.00 (includes G.S.T.)

### RUSTIC WILLOW FURNITURE MAKING Rustic Garden Trellis

A Trellis is the perfect structure to train quick growing morning glories, clematis or honeysuckle. It looks beautiful covered in vines or its bare silhouette against the winter snow. It is approximately 6.5 feet high and 3.5 feet wide. An additional supply fee of \$45.00 is payable to the instructor. For adults.

Saturday, May 4 10:00 a.m. - 2:00 p.m.  
\$22.00 (includes G.S.T.)

### Rustic Willow Headboard

The headboard offers a great opportunity for the individual creative design. We will learn how to design and construct the headboard from natural materials. Specific sizes can be ordered at registration. An additional supply fee of \$55.00 is payable to the instructor. For adults.

Saturday, May 11 9:00 a.m. - 2:00 p.m.  
\$27.00 (includes G.S.T.)

### Standing Planter

This practical and well-proportioned plant stand measures 9" deep X 32" wide X 32" high. It is constructed of willow and alder. The sculptural design comes from your imagination. An additional supply fee of \$45 is payable to the instructor. For adults.

Saturday, June 1 10:00 a.m. - 2:00 p.m.  
\$22.00 (includes G.S.T.)

**Fitness Club:** We are proud to announce our best ever fitness club. For only \$70.00 per participant (\$50.00 if under 18 years of age - identification required), you have the convenience of attending any or all of the different fitness classes offered. Not only will you receive variety and flexibility, you will also get quality instruction on a new sound system, new equipment and a great workout! **NB. Childcare is available for Low & Tone for \$40.00 per family.**

	Monday	Tuesday	Wednesday	Thursday	Friday
6:45 - 7:45 a.m.		Low Impact		Low Impact	
9:15 - 9:30 a.m.					Body Sculpt
9:30 - 10:30 a.m.	Low & Tone		Low & Tone		Low & Tone
6:00 - 7:00 p.m.	Step	Calorie Burner	Step	Calorie Burner	
7:00 - 8:00 p.m.		Low Impact		Low Impact	

## Adult Programmes

### BADMINTON

Join our group for an enjoyable evening of pick-up badminton. Get into shape with this great racket sport. Located at Mutchmor School gym.

Mondays 7:00 p.m. - 10:00 p.m.  
April 15 - June 17 (excluding May 10)  
\$15.00 (includes G.S.T.)

### YOGA

This class provides the beginner and intermediate with a chance to develop a profound sense of well being and wholeness. Postures for flexibility and strength, rejuvenating healing breathing techniques, deep relaxation, meditation, and the underlying meaning of yoga - a union of body, mind and spirit.

Monday 7:15 p.m. - 8:45 p.m.  
April 1 - June 3 (excluding April 8 and May 20)  
\$50.00 (includes G.S.T.)

### TAI CHI (Yang Style)

A century old Chinese exercise which is performed in a gentle and relaxed manner. Can be practiced by people of all ages and fitness levels. Benefits flexibility, circulation, digestion, and metabolic rate, as well as relief from stress and its symptoms.

Wednesdays April 10 - June 5  
Beginners 7:00 p.m. - 8:00 p.m.  
Intermediate 8:00 p.m. - 9:00 p.m.  
\$33.00

### GLOBAL FLAVORS

This is an economic low-fat Asian cooking class. Join us each week and learn Asian cooking the authentic way.

Mondays 7:00 p.m. - 9:00 p.m.  
April 15 - June 10 (excluding May 20)  
\$78.00 (includes G.S.T. and materials)

### STAINED GLASS CREATIONS

The "Copperfoil Technique" is explored and beginners learn to make suncatchers and a small panel. Intermediate students are also welcome to learn new techniques. A list of required supplies costing approx. \$44.00 will be given at the first class.

Beginners and Intermediate (combined)  
Mondays 7:00 p.m. - 9:30 p.m.  
April 15 - June 10 (excluding May 20)  
\$61.00 (includes G.S.T.)

### PET DOG TRAINING

Sometimes we are hampered by insufficient or incorrect information. This course hopes to improve the quality of life for you, your dog, and your neighbours.

Wednesdays 7:00 p.m. - 8:00 p.m.  
April 3 - May 22  
\$50.00 per dog (includes G.S.T.)

### TOLE PAINTING

If you enjoy Folk Art then join Cheryl Roach for this popular class. Learn how to paint a bird feeder or a jewelry box, the project is up to you. Woodcuts are available, at discounted prices, through the instructor. Limited paints and brushes are supplied.

Saturdays 10:00 a.m. - 2:00 p.m.  
April 13 - June 1  
\$110.00 (includes 1 wood cut and G.S.T.)

### POTTERY

**BEGINNER** - Develop and improve your creative skills with clay. Hand building and wheel work will be included.

Thursdays 7:00 p.m. - 10:00 p.m.  
April 4 - June 6

**ADVANCED** - This class will learn how to throw intentionally rather than by accident. We will concentrate on shapes, multiples, fitted lids, handles, and spouts. Wheel experience is essential.

Mondays 7:00 p.m. - 10:00 p.m.  
April 1 - June 24 (excluding April 8 and May 20)

All Classes are \$110 (includes G.S.T.)  
Does not include the cost of clay.  
**Note:** Due to limited space, registrants may register for only one additional person for adult pottery classes.

### Pottery Studio

3 month seasonal memberships are available for individuals to have independent work time. The studio is open for members whenever the Community Center is open and no classes are scheduled. For information, please call Pat Strickland (564-1058).

**\$107.00 per term (includes G.S.T.)**  
\*Each term is 3 months  
January - March / April - June /  
July - September / October - December

### REVEALING THE ARTIST WITHIN

Come join Chandler Swain and explore the practical skills of drawing while using a wide spectrum of drawing materials. Each week we will look at different methods of interpreting visual clues to create satisfying results. This course is geared to all levels. A list of basic materials is available at the community center.

Thursdays 7:00 p.m. - 9:30 p.m.  
April 11 - May 30  
\$70.00 (includes G.S.T.)

### THE GLEBE KNIT WITS CLUB (LEARN TO KNIT THE NO STRESS WAY)

This club is designed for the beginner and the intermediate knitter. All knitters are welcome to share ideas, successful techniques, learn how to read patterns, and to socialize. All participants are encouraged to work at their own pace. Sweater kits are available for less than \$50.00. Men are welcome, don't let the ladies have all the fun!

Wednesdays 7:00 p.m. - 9:00 p.m.  
April 3 - June 5  
\$59.00 (new knitters)  
\$54.00 (returning knitters)  
Prices include G.S.T.

### INTRODUCTORY SPANISH

Introductory Spanish for fun and conversation. Covers vocabulary, phonetics, and grammatical structure of the Spanish language. Activities designed to develop comprehension. Class will take place at Mutchmor Public School Rm. 7.

Thursdays 7:00 p.m. - 9:00 p.m.  
April 11 - May 30  
\$65.00 (includes G.S.T.)

### CONVERSATIONAL SPANISH

Have some previous knowledge of the Spanish language and would like to take it further? Well then this course is for you! This class is for fun and teaches participants situational comprehension. Vocabulary, phonetics, and grammatical structure of the Spanish language will be explored. Some role playing will be done to encourage dialogue. Classes will take place at Mutchmor Public School Rm. 7.

Tuesdays 7:00 p.m. - 9:00 p.m.  
April 9 - May 28  
\$65.00 (includes G.S.T.)

## New flower shop blooms

The Emerald Ivy Florist  
740 Bank Street (at Second Ave.)  
Hours: Mon-Wed 9 am - 6 pm  
Thur-Fri 9 am - 8 pm  
Sat 9 am - 6 pm  
Sun. 10 am - 5 pm  
Telephone: A-Flower (235-6937)  
Newcomers to the Glebe, but not to the flower business, The Emerald Ivy Florist opened its doors on Bank near Second Avenue at the beginning of February. The two owners, Ted Vandenberg and Frank Moore, are carrying on their tradition of supplying quality fresh cut flowers and plants — both domestic and exotic — from around the world.

Another aim is to introduce new

hybrid stock to their customers as it becomes commercially available.

Ted feels that it is important for a florist to be competitive and to have something for everyone with a variety of price ranges. In many cases, flowers are imported directly from the growers so the customers are assured of fresh stock and reasonable prices. The shop specializes in high-style designs for any occasion. As well, the Emerald Ivy Florist has five major wire services available so their customers can send flowers anywhere.

The Emerald Ivy Florist is a welcome addition to your flower buying choices in the Glebe!



**the TEA PARTY'S**  
4th Edition of  
favourite soup recipes  
**FREE**  
with the purchase of our  
Mad Hatter's tea shirt  
at the special price of \$14.99  
(regular total price \$29.99)  
103 Fourth Ave. 238-5031



## SPORTS & SPINAL INJURY CLINIC

SPORTS MEDICINE PHYSICIANS AND PHYSIOTHERAPISTS WORKING TOGETHER

No referral necessary

No waiting period

M.D.'s — OHIP covered

Physiotherapy — Extended  
health care coverage

The Clinic focuses on the treatment of sports, back and other muscle and skeletal injuries.

La Clinique concentre sur le traitement de problèmes sportifs, de dos et autre blessures musculo-squelettiques.



Bernie Lalonde, M.D.  
Robert Gauvreau, M.D.  
Eleanor Cox, B.P.T.

Carling Medical Centre,  
1095 Carling Avenue, Suite 101  
Ottawa, Ontario K1Y 4P6  
(613) 729-8098

## Accent on Beauty

Esthetics & Electrolysis

Facials	Manicures
Pedicures	Waxing
Electrolysis	Make-up
Massage	

26 - 99 Fifth Ave. (Fifth Avenue Court)  
**238-3236** Free Customer Parking



# REFLECTIONS

## HAIR STUDIO

782 BANK STREET IN THE GLEBE

A Spring Special On All Retail Products  
Of 30% In The Month Of March.

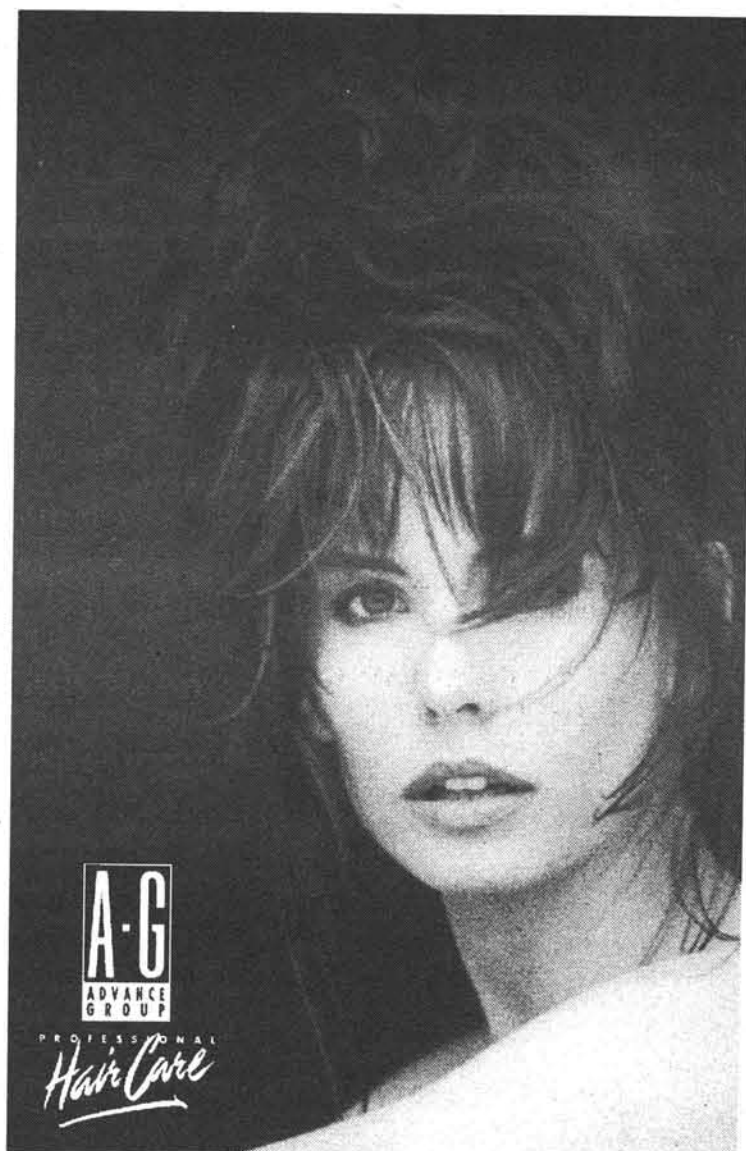
To Service You On All Your Hairdressing  
Needs For A New Look For Spring,  
Please Call:

Pierre, France, Brenda, Pauline,  
Carlo, Sylvie or Stephanie.

5 6 3 - 1 7 - 0 0

REFLECTIONS HAIR STUDIO IS OWNED AND OPERATED BY PIERRE HAHN.

OPEN FROM MONDAY THROUGH SATURDAYS 9:00 A.M. TO 6:00 P.M.  
LATE NIGHTS THURSDAY AND FRIDAY TIL 8 P.M.



**A-G**  
ADVANCE  
GROUP

PROFESSIONAL  
*Hair Care*

# ARTS

## CALL TO ARTISTS

# ART in the PARK

**FOURTH ANNUAL COMMUNITY ARTS FESTIVAL  
CENTRAL PARK in the GLEBE  
JUNE 8TH, 1996**

Are you a professional or upcoming artist/craftsperson?  
Would you love an inexpensive forum for your work, free of red tape?  
The only criteria is a small entry fee and commitment to help make this a dynamic event of the Ottawa arts calendar.

This venue is a wonderful opportunity to provide exposure for your work and recognition for you as an artist in the community.

Our mandate is to create a strong community of artists/crafts people through mutual support and to provide ongoing energy for an accessible, co-operatively run, non-profit venue.

Each participant will be required to take on a task to help make Art in the Park a resounding success.

For information on terms of the agreement call 521-9422.

Participants must pay a \$10 registration fee before the registration date of June 1st, 1996, after which a late fee of \$20 will be imposed. The registration fee is non refundable in the event of cancellation.

There will be an information meeting Tuesday, May 14th, at 7:00 p.m., at the Glebe Community Centre where participants can choose a task. A fee of \$30 will be required from those participants not taking on a co-operative task.

**ART IN THE PARK ..... PLEASE ENCLOSE YOUR ENTRY FEE !!!**

NAME: \_\_\_\_\_

ADDRESS: \_\_\_\_\_

PHONE: \_\_\_\_\_

Description of work: \_\_\_\_\_

If you will not be requiring snow fence please check here : \_\_\_\_\_

I agree to the terms of participation in Art in the Park: \_\_\_\_\_

Signature \_\_\_\_\_ Date \_\_\_\_\_

Please send this form with a cheque payable to Art in the Park to :  
The Glebe Community Centre,  
690 Lyon Street,  
Ottawa, K1S 3Z9

For more information call: 521-9422

## Art and music join for *Celtic Mass for the Sea*

The Canadian Centennial Choir brings together two aspects of the art world in an extraordinary event. Art and music bound by a common theme join forces in a powerful presentation of artistic cooperation.

The Ottawa premiere performance of *The Celtic Mass for the Sea* by Halifax native Scott Macmillan, directed by James Caswell will be accompanied by the distinguished *Thirteen Strings*, four soloists and a Celtic ensemble.

The art of Christopher Lea Dunning will set the scene and enhance the performance with three monu-

mental canvases and a commissioned work. Also on the program will be the a cappella performance of Aaron Copland's *In the Beginning*.

The concert will take place at Dominion Chalmers Church, 355 Cooper (at O'Connor) Saturday, March 16 at 8:00 p.m. Advance tickets are available at Place Muzik, HMV Sparks, The Book Bazaar, Herb and Spice on Wellington or by calling 682-5198. Ticket prices are \$15 and \$11. At the door tickets will be \$17 and \$13.

Recycling for our community

## PAPER RECYCLING DEPOT

LANSDOWNE PARK APRIL 13 & MAY 11  
9:00AM TO NOON

BANK STREET ENTRANCE

If your present program doesn't accept computer paper, fax paper, glossy paper, newsprint, egg cartons, posters, greeting cards, file folders, post-it notes, cereal boxes, corrugated cardboard, packing paper, gift wrap, telephone books, office paper, junk mail, directories, white paper, coloured paper, Kraft paper, paper bags, envelopes, paper towel rolls, catalogues...

**we will!!**

In an effort to promote the collection of recyclable products, Waste Recycling (Ottawa/Hull) Inc., in conjunction with Arbour Recycled Products, Glebe Trotters, the Bike Stop, LOEB Glebe, and Councillor Jim Watson will operate a paper recycling depot at Lansdowne Park

Saturday April 13 & May 11, 1996  
between 9:00 a.m. to 12:00 noon.

**LOEB Glebe**  
754 Bank Street

**GLEBE TROTTERS**  
CASUAL FOOTWEAR

**Arbour**

Ottawa Valley's Environmental Shoppe,  
800 Bank

**WRI**  
WASTE RECYCLING (OTTAWA/HULL) INC.

Councillor  
Jim Watson  
City of Ottawa

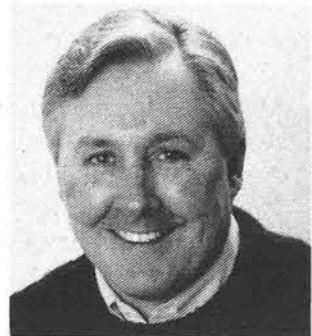
**Bike Stop**  
1233 BANK  
Ottawa, Ont.  
K1S 3X7  
731-5211

**Recuperation  
Cascades  
inc.**

**ASA** A SOURCE OF ART

99 Fifth Avenue Court  
Ottawa K1S 5K4  
238-5908

March 5-16 Margot Bernier *Landscapes from the Imagination* .  
March 19-30 David Becker *Crossing the Line*. Drawings &  
photographs. Reception March 23, 12-4:30  
April 2-13 Karole Marois *New Works*  
Gallery Hours: Tues. - Sat. 11:30 am - 4:30 pm.



**Richard  
Patten**  
MPP Député  
Ottawa Centre

1276 Wellington  
722-6414 ♦ fax 722-6703

Please support  
our advertisers

## ART LESSONS

- Pottery and Sculpting (in terra cotta clay)
- Tapestry Weaving and Design

Tuesday Evenings 7 - 9:30 - Saturday Morning 10 a.m. - 12:30

10 WEEKS • BYWARD MARKET AREA

**LOCAL ARTISTS**

**241-8802**

## Corpus Christi Catholic Elementary School

### Creating a habitat on Mars

BY LUCILLE B. PUMMER,  
PRINCIPAL  
JUNIOR KINDERGARTEN REG-  
ISTRATION

If you missed our Junior Kindergarten Registration during the week of March 5-8, 1996, please call the school at 232-9743 to arrange an appointment. Kindergarten Registration Packages are available from the office. We would be delighted to talk with you about our program and the activities of our dynamic school community, answer any questions you may have about our French Partial Immersion program and provide you with the opportunity to visit our Kindergarten classes.

#### MARVILLE PROGRAM

Our Grade Six students are industriously working on the Canadian National Marsville Program. Mme Lafleur and Mrs. Corrigan are facilitating the project. The class developed a mission statement, determined the parameters of their project and are in the process of researching and collating the pertinent data for creating a habitat on Mars. The students are to construct their own habitat which would be viable for human life on Mars. Through their research they are to develop an air system that would function on Mars and support the other systems being developed by students in other Ottawa schools. The students will also develop a land rover using Robotics software that they will manoeuvre over the

simulated terrain of Mars.

The coordinators of the Ottawa project will partner our school team with other nearby schools to develop all the systems required for a crew to work on Mars. These systems are: air, water, transportation, communication, recreation and waste management. The students will communicate with each other while they do their research as well as on Link-Up Day using Internet. Scientists and Engineers available in Ottawa and through InterNet will serve as mentors, and will work directly with teachers and students as they design their version of the settlement on the red planet.

Link-Up Day will be Saturday, April 27. The Ottawa schools will be at the Museum of Science and Technology. In each city, teams involved in the project from Grades 6, 7, & 8 will gather for the construction of their habitats. The Canadian Coordinators from the Toronto Science Centre will connect each city through advanced communication systems to allow the students to compare solutions. Our Grade Six students will edit the communiqués that the Ottawa teams will send to other cities. A member of the Astronaut Program will be present at the museum to offer suggestions to the school mission teams. The astronaut will talk to students about life as an astronaut and Canada's contribution.

## MANY THANKS

FROM  
CORPUS CHRISTI SCHOOL

The School P.T.A. would like to sincerely thank all the sponsors who donated prizes for our eighth annual **Mardis Gras Carnival**. It was a huge success.

Alpha Video, Always Balloons, Arbour Recycled Products, Avenue Restaurant, Bank Of Nova Scotia (Bank & Fourth), Baxters, Burger King (Dalhousie St.), Canadian Museum Of Civilization, Capital Home Hardware, Chez 106, Cognos Inc., Davidson Jewellers, Discovery Toys (Nora Colaiacovo), Donnelly's Collision Centre, Dr. Hashem (738A Bank St.), Drummond Fuels, E.R. Fisher, Eastwind, Everfresh Juice Co., Figure 8, Glebe Emporium, Glebe Fashion Cleaners, Goodfellows Cleaners, Grabba Jabba, Green Door Restaurant, Hershey Canada Inc., Hillary's (1235 Bank St.), Hostess Frito Lay, Hotel Maritime, Ian Kimmerly Stamps Ltd., Kent Bowling Lanes, Kentucky Fried Chicken, Lilly of the Valley Florists, Loblaw's (Isabella St.), Loeb Glebe, M.T. Tummies, MacEwen Gas, Matheson Gas, McDonalds (Billings Bridge), Mexicali Rosa's, Middle East, Mr. Muffler (890 Bank St.), Mrs. Tiggy Winkles, Murphy's Garage, Museum of Science & Technology, Nate's Deli, Northern Telecom, Oldies 1310, Olympic Ski Shop, Optical Excellence, Oster's Party Supplies, Ottawa Citizen, Ottawa Hydro, Ottawa Lynx, Ottawa Rough Riders, Ottawa Senators, Ottawa Sun, Ottawa-Carleton Regional Police, Puggwash Children's Books, Reflections Hair Studio, Rick's Cantina & Grill, Shanlyn Enterprise (Lynne Gibbens), Shoppers Drug Mart (Westgate), St. Huberts, T.D. Bank (Minto Place), The Papery, The Tea Party, Voyageur Colonial, White Rose, Yuk Yuks



## Glashan Update



**Glashan boys' volleyball teams win OBE 1996 grade 7/8 championship and bronze medal in bantam provincial tourney**

Glashan "OBE Spikers"	Glashan "Bantam Spikers"
Hon Lam Le	Hon Lam Le
Danny Desclouds	Danny Desclouds
Ezra Hart	Ezra Hart
Tosh Galaski	Tosh Galaski
Chris Allen	Nhan Nguyen
Soeum Sem	Hang Ngoy
Sophy Mok	Sinara Nov
Johnson Tang	Johnston Tang
Lonnie Fennell	Lonnie Fennell
Senzury Nop	Senzury Nop
Nhanh Nguyen	Nhanh Nguyen
Quan Nguyen	Quan Nguyen
Tong Ngoy	



"Coaches"  
Rick Desclouds • Pat Fulsom

## Glashan students put their hearts into Valentine's Day

By Paul Chohan

On a beautiful Valentine's day 1996, a mist of love passed through the air. The sun was shining and everyone was having an enjoyable time. The students of Glashan Intermediate School were rock'n and rolling to cool beats put out by the DJ. As the students rocked and rolled, you could hear the rhythmic beats down Bank and Kent Streets. To get into this extravagant dance, a fee was charged to help the Emergency Food Centre. A canned food or a loonie could get you into the Valentine celebrations.

Glashan students were proud to donate \$136.50 to Frances M. Flouiers, a worker at the Food Centre. We later received a thank you letter from the Emergency Food Centre telling us how the needy ap-

preciated our food.

I had the pleasure of bringing the canned foods over with the help of one of my friends. The five boxes of canned foods, which took us three trips, all went to the needy. As we walked inside the Emergency Food Centre, located at 507 Bank, we were greeted by the nice workers there who thanked us.

If you ever want to do voluntary work at the Emergency Food Centre, it is located across from the school, and beside McLeod-Stewarton Church at 507 Bank. Remember...many are in need of these special items and money, so if we don't do anything now, who will?

*Paul Chohan is a Grade 7 student at Glashan Intermediate P.S.*

# SCHOOL NEWS

## 'Healthy Heart' visits Lady Evelyn School

BY MARTHA BOWERS

From whales and valentines to pioneers and modern technology – life at Lady Evelyn is always an exciting learning experience. In January, Canadian Wildlife Federation representatives visited the school to do a presentation on whales. Always a popular theme, their informative talk and film were well received, as was the life-size whale model that filled the gym.

Lady Evelyn's long-standing relationship with the Heart Institute at the Ottawa Civic Hospital continues to grow. Classes once again made valentines and collected money, that would otherwise have been spent on commercial cards, to donate to the Institute. The "Healthy Heart" mascot visited the school to talk about heart disease and healthy lifestyles and respond to students' questions.

In celebration of Valentine's Day and to ease the winter 'blahs,' a family dance was held on February 9. The gymnasium, decorated by the noontime artists, was filled with bodies, young and not-so-young, moving and grooving to the sounds of rock music. Thanks to Jeanette Abe for the delicious snacks, and to Colleen Wrighte and members of the organizing committee for such a fun filled and successful event, that even turned a profit!

All of the classes are busy with various projects. The early primary children have been learning about hibernation – the why, how and which animals do it. Mrs. Nel-

son's and Mrs. Rumstein's classes have been engrossed in their pioneer theme. They have constructed models of pioneer settlements while learning about the life of the early settlers.

Creativity and imagination have blossomed in Mrs. Petrie's class. The students have recently completed writing, illustrating and printing children's books. Look out Robert Munsch, a new generation of budding authors is on the rise! At the other end of the education spectrum, the Middle Junior Classes have continued working on their technology theme, designing energy efficient and pollution-free inventions. With major changes in communications over the last few years, telephone technology has become an even more important part of our lives. Thanks to a parent, the classes had the opportunity to visit Bell Canada for a first-hand look at the latest in communication links and capabilities. They experienced a conference call and saw the maelstrom of cables and wires that have handled our local and long-distance calls over the years.

### KINDERGARTEN REGISTRATION

Don't forget that kindergarten registration is scheduled from March 20 to 29. Because Lady Evelyn's population has increased so much, fewer cross-boundary transfers will be accepted.

Happy March Break everyone! Hope the weather cooperates for whatever activities you have planned.

## Children's entertainer at Rasputin's

On Sunday, March 31 at 1 pm Chris McKhool will perform at Rasputin's, 696 Bronson between Clemow and Powell Avenues.

Chris is an early '80s patron of Rasputin's who has become a much sought-after children's performer travelling the school circuit across Ontario.

After TV appearances and thousands of shows, Chris returns to Rasputin's as an "eco-troubadour" of the '90s creating a musical mosaic from a variety of styles (folk, pop & rap) and instruments (violin, guitar, and pennywhistle).

His first recording entitled *When You're a Tree* has sold out, and a new CD and cassette are being created for release at the end of March. His shows are interactive with lots of participation, singing, dancing and talking about the environment. Performing his  
March 8, 1996 Glebe Report-22

original songs, Chris takes his audience beyond the 3 Rs. They are a hit with children ages 4-11 and families.

Tickets are \$5 each. Call 230-5102. Seating is limited to 40 persons.



Member by invitation:

CANADIAN-INDEPENDENT group of funeral homes.

## KELLY FUNERAL HOMES

*Lorne Kelly - Owner*



585 Somerset Street, Ottawa

Serving the National Capital Region  
since 1954

235-6712

Canadian-Independent

Note: Members must be Canadian Owned and Operated Independent of International Funeral Industry Conglomerates.

## OPENING SPECIALS

#1 Wild Mussels ~~1.29~~ lb. NOW **.99** lb.

#1 Prefrozen Equador White Medium Shrimp

~~10.99~~ lb. NOW **8.99** lb.



# LAPINTE

FREE PARKING  
Open to the Public  
Hours:  
Mon. - Sat.  
8 a.m. - 6 p.m.

445 CATHERINE STREET  
(Between Percy & Bronson)

233-6221

## First Avenue Public School

# Young public speakers reveal their secrets

BY RUTH BUTTON

"Public speaking" is regularly listed as one of the greatest fears of adults. Fortunately, adults don't have to participate in the Ontario school public speaking contest. Each year, students in Ontario's schools draft, write and present a speech to compete in a province wide contest.

What do students think of this programme? "Hate it," and "nervous" were the first reactions, followed by the acknowledgment that once it was over, it was "fun," and "good experience." I spoke with three of First Avenue's students to find out what happens in between. Micaela Mankowski, Kelsey Kennedy and Andje Lewkowicz-Lalonde were three of 14 students picked by their peers and teachers to present their French language speech to the rest of the school.

Picking the subject to write about seemed to be one of the biggest hurdles. "Starting and organizing is hard," said Andje, who spoke about the Monarch Butterfly. Finding relatively little information in the library, he finally found most of his information on the Internet. All agreed that they wanted to speak about something that not only interested them, but that their classmates would enjoy hearing. "Why am I telling people this?" Micaela would ask herself. She decided to speak about Karate, a hobby for the past four years that has earned her a black belt. She picked this subject after seeing that the students in the school seemed very interested in a recent demonstration. Kelsey decided to speak about some of the Guinness Records, and after spending a lot of time going over them, bounced some ideas off her friends. She settled on seven, including the world's Biggest Snowman, Biggest Pizza and Longest Finger Nails.

All three agreed that it was important to know your speech by heart. Although "cue-cards" are encouraged, they felt that you can more effectively address your audience if you don't have to keep looking at your notes. While presenting their speech of two to four minutes in front of their class, their peers and teacher judge each speech on such factors as expression, interest, memorization, ability to answer questions and overall presentation. Roughly two were picked from each of the Grade 4, 5 and 6 classes to present in the gym to the grades 3 through 6, and to the judges who came from outside

of the school.

Some of the finalists felt more nervous going to the gym, while others felt that if they could give a good speech to their classmates, they had it made! However, Andje, Kelsey and Micaela all agreed that the questions from the judges were harder than those they had to answer in class. "They were questions to make you think, not memorize," said Micaela. Obviously well prepared, these three had spent a lot of time practicing their speeches. Micaela Mankowski won first place in the overall French category and will represent First Avenue on March 5th, at Fielding Drive Public School for the city-wide contest. Kelsey Kennedy came second and Laura Reid, third. Andje Lewkowicz-Lalonde was first in a category for those with extra French, and Laura Haley first in a category for those with less French education; they also will go to the city-wide contest. The winners will compete in Toronto for the provincial championship. We wish them all good luck!

### HERITAGE DAY

February 19, Heritage Day was celebrated in school. Some students dressed up depicting their ancestors, and some interesting old family photos and heirlooms were shown in class. The primary grades invited grandparents to share their childhood memories.

### BOOKS TO RECYCLE? DON'T FORGET FIRST AVENUE'S BOOK FAIR.

The dates for First Avenue's 12th Annual Book Fair have been set for April 18-20. Now is the time to clear out those book shelves and cupboards, and recycle your old books, cassette tapes, CD's and videos. Pack them up and either pass them to a First Avenue student, drop them off at the school, or we'll pick them up for you if you call Maha at 237-0252 or Cheryl at 236-9090.

### KINDERGARTEN REGISTRATION

Registration for Junior and Senior Kindergarten takes place at the school on Wednesday March 20th, and ongoing to March 29th. If you missed the information night, or if you have any questions, please call the school at 239-2261.

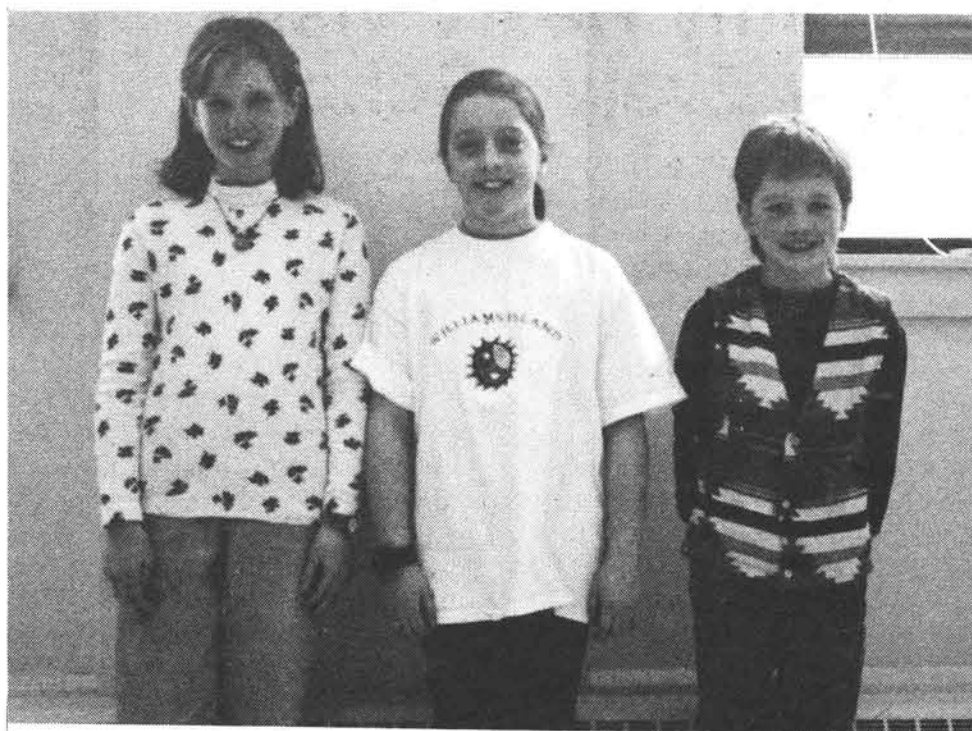


Photo: Ruth Button

Left to right: Micaela Mankowski, Kelsey Kennedy & Andje Lewkowicz-Lalonde.



Photo: Ruth Button

Grandmothers share their memories in Mme Berthelot's Grade 1 class. Left to right: Lillian Wallace, Marian Wallace, Theresa-Anne Dunlop, Robbie Dunlop

**Ecole Parsifal School**  
630 Island Park Drive  
Ottawa, Ont K1Y 0B7 (613) 729-7545

A bilingual elementary Waldorf school from K - 8  
based on the pedagogy of *Rudolf Steiner*.

Parsifal School is dedicated to educating the whole child, by recognizing his/her emotional and spiritual needs. The comprehensive academic program is integrated with artistic activities, including music, drama, watercolour painting and movement.

**Open House for Kindergarten (age 4-6)**  
March 23, 1996 from 10:00 a.m. to 12:00 p.m.

### **Thyroid disease is real.**

Know the facts.  
Call the Ottawa Chapter Thyroid Foundation of Canada  
**Help Line 729-9089.**

THYR3X10



# SCHOOL NEWS

## Puppets bring French to life at Mutchmor School

BY JACQUIE MANSELL

"My goal is to make the children realize that it is fun to learn another language," explains Joanne Cameron, Mutchmor's new Primary Core French teacher. In keeping with this philosophy, "Mlle Joanne" uses a special program, called *Dimoitou*, which employs puppets for the teaching of language. It is a very visual program involving a lot of dance, singing and role-playing. Rhythmic, repetitive written materials (similar to nursery rhymes) are used to introduce and reinforce basic vocabulary, and to support oral learning with opportunities to also read French.

Mlle Cameron believes that an important part of her job is to generate enthusiasm for French within the whole school community. "It is



Mlle Joanne Cameron

unfortunate," she says "that there are often too many negative feelings toward and not enough support for Core French programs." To help bring the language alive at Mutchmor, she introduces her students to many of the cultural aspects of French -- from tales of the early

voyageurs as told by special guest, singer Louis Mercier, to learning about Quebec City and its famous winter "Carnaval." On February 2, the whole of Mutchmor was able to enjoy its own Carnaval, complete with a French-speaking Bonhomme Carnaval -- thanks to Mlle Joanne and our Junior Division French teacher, Nancy Wheeler.

Mlle Cameron is enthusiastic about the innovative *Dimoitou* program and the inclusion of broader cultural activities in the teaching of language. "The children really like it; they learn a lot of French this way. It gives them a very solid foundation in the language." And she should know, having taught for many years in the French Immersion system -- in Edmonton, Kirkland Lake (Northern Ontario) and at Connaught School in Ottawa.

In addition to being an adventurous and enthusiastic teacher, Joanne Cameron is also an adventurous and enthusiastic traveller. She has travelled widely in Europe, South-east Asia, India and Central America. Most recently, in 1994/95, she and her husband spent two years in Japan, where Joanne was able to combine her two enthusiasms by teaching both English and French in a private Japanese "cultural school." At this school, a kind of service organization which provided a wide variety of learning opportunities to the whole community, she was particularly pleased to be able to teach children and adults of all ages.

We are indeed fortunate to have such an enthusiastic and capable teacher at our school -- Welcome to Mutchmor, "Mlle Joanne."

## Kindergarten registration at Mutchmor March 20-29

BY JACQUIE MANSELL & KELLY SWEENEY

It's the time again when parents of 3 and 4-year olds must make that big decision -- where will I send my child to school? In addition to a variety of private schools and to the schools within the local Separate School Board, there are three non-Catholic public school choices available to Glebe area residents: the English/Core French option (Mutchmor), the Alternative School option (Lady Evelyn) and the French Immersion option (First Avenue). Each option has its special strengths; the final choice depends on the sort of education you feel best suits the needs of your family and of your individual child.

If you were unable to attend Mutchmor's Kindergarten Information Night on February 28, or for any reason would like more information on our school, please contact Mutchmor's principal, Pat Hendry, at 239-2267. Meanwhile, we hope the following brief summary will help.

### KINDERGARTEN AND PRIMARY EDUCATION AT MUTCHMOR

Mutchmor offers education in English, with a "Core French" program which provides all children from Senior Kindergarten to Grade 6 inclusive with daily instruction in French. Every effort is made to also provide French in Junior Kindergarten. There is currently one Junior Kindergarten and one Junior/Senior Kindergarten class at Mutchmor, both in the mornings. The number and scheduling of kindergarten classes is determined each year by enrolment and by the needs of the community.

Mutchmor's Primary Division  
March 8, 1996 Glebe Report-24

(grades 1-3 inclusive) consists of four regular primary classes, a primary Special Needs class and a primary Learning Language Disability class. There is a wide range of age, experience and backgrounds within the primary staff at Mutchmor -- a conscious choice based on the beliefs that education thrives on a rich diversity of perspectives and ideas.

The philosophy at Mutchmor is to look at the whole child and to provide as many different kinds of learning opportunities as possible in order to support both personal and academic growth. The goal is to create an "activity-based" learning environment that is inviting, stimulating and will encourage students to take responsibility for their own learning.

Although each internal classroom community is important, children are not "isolated" in only the one classroom at Mutchmor. Such things as the school-wide House League and the division-wide choirs (primary, middle and junior) and frequent special events and assemblies give every child many opportunities to mix with her/his wider community and to become very familiar with all the teachers in the school. Primary classes often share field trips and special speakers and many primary classes also "buddy-up" with junior division classes for reading and other special learning situations where younger children can benefit from the support of older students.

In the academic arena, Mutchmor is one of the schools currently piloting the new OBE Language Document, which outlines Learning Outcomes for language in the primary years. In addition, all

Mutchmor staff are working on the Learning Outcomes for Math.

Above all, Mutchmor is a strong community school. Parents are welcome in the school and in the classrooms and are an especially important part of the kindergarten/primary program. The staff at Mutchmor strongly support the view expressed by Pat Hendry that "Open communication between home and school paves the way for successful learning experiences for your children."

## New house league co-captains

After an exciting campaign, election day has come and gone and Mutchmor has a new set of House League co-captains. Congratulations, and thanks for taking on these important leadership positions, to: Brian Cameron and Leanne Stalker (Blue House), Tamsin Johnston and Jesse Rankin (Yellow House), Tim Pearson and Grace Kennedy (Red House) and Phoebe Capelle and Kyle Paterson (Green House).

## Technology update

Mutchmor will soon be receiving six more multi-media work stations. They will be shared amongst classrooms and will be set up in such a way as to enable the creation of portable mini-labs. We will also have three school computers hooked up to the Internet very shortly. Almost all the staff have attended at least two evenings of training on Internet and are beginning training on Windows 95, which will be on the new computers. Finally, Mutchmor's Science and Technology Club is well into its second session, on mapping.

## Coming events

- March 11-15: March Break
- March 20-28: Cross-boundary Transfers
- March 20-29: Kindergarten Registration
- March 29: PA Day -- Parent/Teacher Interviews
- Monday, April 1: Home and School Meeting -- 7 p.m.

**Tutorial Services of Ontario** **Invest in your future!**

**IMPROVE YOUR GRADES**

Many qualified tutors available to come to the home and provide students with assistance in any subject from grade school through university. We provide remediation for Attention Deficit Disorder.

**Call for information... 599-8531**

**AFFORDABLE RATES**

## Glebe Collegiate

### Monte Carlo night

BY ROCCO ROMEO

On February 13, over 250 students thronged into the Glebe gym for the 23th annual Monte Carlo Night sponsored by the Senior Band as part of Winter Carnival. More than 30 teachers were present to supervise and join in the fun. The funds raised will help to buy much-needed equipment for the music programme.

In the spirit of the evening, students dressed up in costumes from the 1920's and 1930's and played a variety of games such as blackjack, craps, roulette, crown and anchor and horse races. Prizes were given for best costumes and for the winners of the swing dance competi-

tion. Later, an auction was held and students were able to use their winnings to bid for valuable gifts donated by generous local merchants.

#### OUTSTANDING PERFORMANCES

On February 24, the Glebe Junior and Senior Stage Bands, under the direction of Rocco Romeo gave strong performances at the 1996 Capital Region Music Festival held at Woodroffe High School and both were awarded silver medals.

Jeremy Thompson won the Bill Shuttleworth Memorial Scholarship for superior musical performance. This scholarship goes to an outstanding music student who will be pursuing post-secondary music education in Canada.

### Celebrity Volleyball helps United Way



Glebe teachers who participated in Celebrity Volleyball

BY ELIZABETH HOGG

On February 22, Glebe Collegiate sponsored its fourth annual Celebrity Volleyball Tournament for the United Way. There were 36 participating teams of 10 members each, for a total of over 350 students and staff involved. Each team paid a \$150 minimum entry fee and was guaranteed three games between 7:00 a.m. and 4:30 p.m.. Prizes donated by generous Glebe merchants were awarded to *Chicago Hopeless* for raising the most money, (\$240.00), to the *Pop Queens* for the best costumes and to the *Hockey Team* for the most spirit.

Celebrities included representatives from Energy 1200, the RCMP Swat Team, Dominic D'Arcy, and members of the Ottawa Police Force. For the first time, there were two teams of Glebe teachers. Loeb Glebe entered a team and also donated refreshments and prizes.

The Tournament, which was

planned and organized by the students of the Glebe Athletic Board with support from Ms. Rosenthal, raised \$5,000.00 for the United Way and \$700.00 for the athletic program at Glebe. The G.A.B. thanks the students and staff at Glebe and the community participants for their keen enthusiasm, both as players and spectators.

### Cross-Country ski team enjoys success

BY ASHLEY RICHARDS

The Glebe cross-country ski team has returned from a very successful trip to North Bay for the Ontario High School Championships.

Junior skier, Mike Swinburne, placed 25th in a field of 197. The Senior Girls' Team placed 10th in the individual component and 8th in the relay component to finish 8th overall in the province. Excellent performances were given by

GLEBE COLLEGIATE INSTITUTE  
SCHOOL COUNCIL

Our second regular meeting will be held on Thursday,  
March 21,  
starting at 7:30 p.m., in the staff room on the second floor of  
Glebe Collegiate.

All are welcome. This meeting will focus on matters of  
concern to the community.

Information: Sheila Selley, 234-9274

### Team Glebe wins 2nd place in robotics competition

On February 22nd, a team of students from Glebe Collegiate arrived in Scarborough, Ontario, to compete in the third annual Canada First Robotics competition and won second place at the national level.

The Canada First project showcases the engineering talents of Canada's top high school students and builds bridges between the corporate and educational communities. Teams of students, assisted by engineering mentors, design and build a remote-controlled robot to compete in an athletic-type competition. Teams are also required to produce a presentation binder and video to document the project. Team Glebe was formed a few months into the school year and has been working long hours on weekends and after school with a team of dedicated Nortel Technology mentors. They topped it all off with an impressive finish in their second year of competition.

The 1996 Canada First games took place from February 22 to 25 and included 18 teams from B.C., Ontario, and Quebec. Team Glebe's robot named Ra rose to this year's challenge of a modified game of soccer, where balls are collected from a pyramid in the centre and placed in an elevated goal to score. Ra was in sixth place heading into the semi-finals, and third going into the final group of four robots. With only one three-point ball separating them from first place, Team Glebe captured a well-earned second place finish. The robot named Havoc from Scarborough's Woburn Collegiate Institute won the com-

petition for the second year in a row. The teams from Glebe and Woburn have been allies since last year's competition and renewed their support this year by helping each other out both during the heats and by cheering each other on.

The team spirit felt by all competitors during the 12-hour competition only added to the satisfaction of seven weeks of hard work. Team Glebe's spirited group not only won second place, but also placed in the top three teams for the Most Creative Strategy Award, as well as the Best Presentation Binder Award.

This unforgettable experience has given Glebe's top students an opportunity to gain 'real world' experience in engineering, management, and teamwork, and have a lot of fun. Team Glebe wishes to thank their sponsors: Mitel Corporation, Nortel Technology (BNR), Shad Valley, Royal Bank of Canada, Glebe Collegiate Institute, Telesat Canada, TMI Communications, The Institute of Electrical and Electronics Engineers, Inc. (IEEE) Ottawa Chapter, Lockheed Martin Canada, SHL Systemhouse and Loeb Beechwood. Special thanks go to the invaluable mentors from Nortel Technology who made the project possible, and Mitel Corporation for its generous support. The students especially appreciate the efforts of science teacher, Ms. Thomas, who was the teacher co-ordinator, and of Mr. Holland, Mr. Ghantous and Mr. Webb, as well as Ms. Thomas, who accompanied them to the competition.

Andrea Wolfson, 155th, Sarah Dingle, 115th, Karen Johnson, 77th, Chris Saveland, 58th and Elanor Waslander, 10th in a field of 206 skiers.

The Senior Boys' Team gave an outstanding effort by winning both the individual and relay components of the event. In individual competition, in a field of 227, Matt Devlin placed 44th, Aaron Hobbs, 16th, Ken Murray, 8th,

Liam Watson, 4th and Karl Saidla, 2nd. In the relay, Watson, Murray, and Saidla finished in first place by more than one minute. In the combined senior division, Glebe placed 4th.

First year coach Ashley Richards was extremely proud of all team members for their tremendous effort and would like to thank everyone involved for a great season.

March 8, 1996 Glebe Report-25

# NEWS

## School break at the Canadian Museum of Nature

For the young (and the not-so-young) in the region over the school break, the **Sharks! Facts And Fantasy** exhibition will offer plenty to look at. Our interpreters will make your visit an experience you won't soon forget!

**Monday to Saturday, March 9 to 24: Marine world close-up** features several 20-minute presentations that will allow you to take a close look at various forms of marine life: crabs, winkles and sea cucumbers, among others. These presentations will start on the hour, from 11:00 am until 3:00 pm. **Once upon a shark** is aimed at the very young. They'll discover that sharks are "cool" and not so scary after all! They can use amusing accessories to imitate sharks' movement and behaviour. These 20-minute presentations start at 10:30 am and 1:30 pm. **Best wishes to a shark** invites budding artists to make their own shark souvenir. This is a continuous activity, from 10:00 am to 5:00 pm.

**Saturdays, March 9, 16 and 23, 1:00 pm to 4:00 pm.** All about aquariums is presented by a marine biologist. You'll learn all about the equipment, the differences between freshwater and salt-water aquariums, as well as the marine life to put in them..

**Sundays, March 10, 17, and 24 1:00 pm to 3:00 pm:** Alex The Friendly Shark will be there for the little ones, with his fantastic balloons that he transforms into fish.

### Carleton University High school March Break program

Come spend a day at Carleton University during March break. Students and parents are invited to meet Carleton University staff daily at 9:00 a.m. and 1:00 p.m. in the University Commons. You will be welcomed by representatives from Admissions, Awards, Athletics and Counselling and Student Life Services, and led by current students on an hour long tour. After the tour, you will want to attend the various events hosted by the academic departments and student services. These activities have been organized especially for you – so come and join us during this week of activities, tours and demonstrations at Carleton! Take a careful look at the schedule to determine the best day(s) for your visit.

Call ahead to book your visit. Your space can be reserved by calling the Office of Admissions **March 8, 1996 Glebe Report-26**

**1:00 pm to 2:00 pm**  
**Splash! Pro scuba divers at work** is presented by a group of professional divers who will demystify complicated-looking scuba equipment. Watch them put on each piece of the equipment that allows them to travel with ease through tropical waters and Arctic seas.

**2:00 pm to 4:00 pm**  
The Museum's marine life specialists will tell you about their research and discoveries.

**Sunday March 10 - Alan Emery**, marine biologist, will discuss the behaviour of sharks, which he has studied during many dives among them.

**Sunday, March 17 - André Martel**, marine biologist, will talk about the invertebrates that live in the sea, such as crabs, winkles and sea cucumbers.

**1:00 pm to 4:00 pm: Shark Art Workshops** for the young and not-so-young:

March 10, 3-D cut-outs  
March 17, Print your place mat  
On Mondays, Wednesdays and Fridays at 1:00 p.m., Gerben and Robert, animal technicians at the Museum, will feed meals to bamboo sharks. Bon appétit!

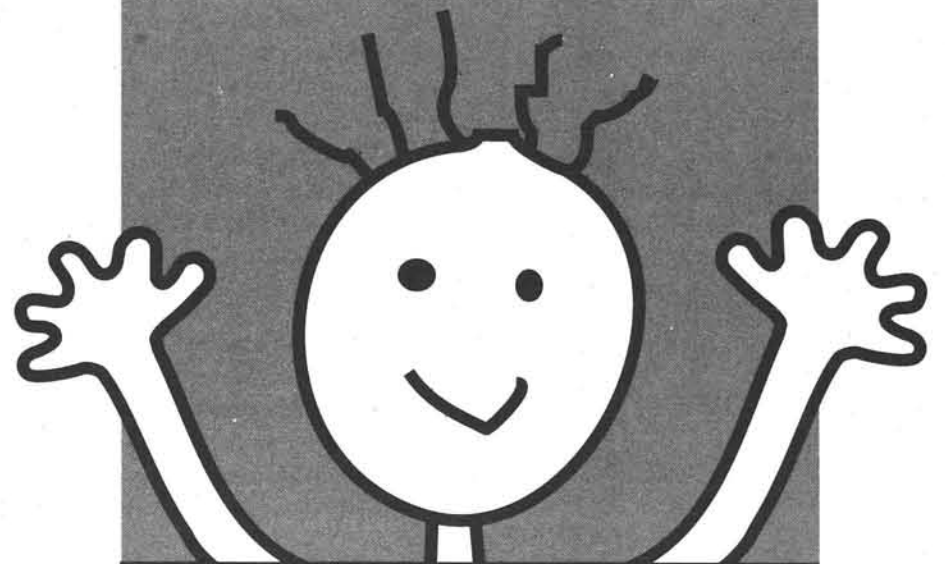
**Flash!** One of the embryos growing peacefully in the aquarium has started to swim inside its capsule, also called a mermaid's purse. Come and watch his progress.

For information call 566-4700.



THE OTTAWA SCHOOL OF  
*speech & drama*  
in association with The National Arts Centre English Theatre

INTRODUCES THE



**PRE-SCHOOL  
CREATIVE  
ARTS  
PROGRAMME**



**FOR CHILDREN  
3 TO 5 YEARS OLD  
1 OR 2 HALF DAYS  
PER WEEK**

**REGISTER NOW!  
FOR SEPTEMBER SESSION  
BEGINS SEPTEMBER 1996**

**FOR FURTHER INFORMATION  
AND REGISTRATION CALL:  
789-6999**

Note: You are welcome to attend any of the lectures indicated in the schedule (by a 5-digit number, i.e. Economics 43.100). Please remember that you are observing a regularly scheduled class and the instructors have asked for your co-operation. Be sure that you arrive in the classroom before the start of class and be prepared to stay until the class is finished.

For a complete schedule and details use a (graphical or text based) World Wide Web browser to visit the following site:

[http://admissions.carleton.ca/current/march\\_break/96.html](http://admissions.carleton.ca/current/march_break/96.html)

## Paris chronicles the expulsion of the Jews in Spain

By  
Sharon  
Abron  
Drache



the defeat of the Visigoths (eight centuries earlier) underwent Reconstruction: the ultimate goal, a Catholic Spain or as author Erna Paris writes: "The advent of Europe's first fascist state."

Paris, whose previous book, *The Garden and the Gun* (1988) ably analyzed strained Arab-Israeli relations, has again done her homework well, but this time she had to rely on research rather than on-the-spot interviews. Her extensive bibliography proves to be part of her burden; she has failed to digest and synthesize adequately — a real disappointment. Fortunately, there are afterwards and forewords plus a series of lists of dates linking major events in Spain with what she terms: "references to events elsewhere in the world." These devices guide readers through her selected material.

She begins with Simon Mac-cabeaus in 133 B.C. expelling Syrians from Jerusalem to a supra-chapter sandwiching the expulsion of Spanish Jews uncomfortably in the middle of (but in actuality, before) post-French Revolution culture. Throughout this attempt at a vivisection of both pluralistic and Reconstructed Catholic Spain,



Author Erna Paris

Paris grapples with myth as well as fact, coming full circle into the modern era. This leap of faith enables her to embrace Hannah Arendt's theory expressed in *The Origins of Totalitarianism*, i.e. "the concept of equality to which a nation within a nation could no longer be tolerated."

What follows is a comparison between Spain's Golden Age (followed by its darkest period of Reconstruction after the Black Death, 1348-53, when Arabs and

Jews were forced to convert to Catholicism) and Germany's fervor to bring nationhood to every citizen including the *volk*. But the comparison is poorly developed, as if Paris is afraid to write what she thinks as she describes the elusive "Germanness" glorified by such philosophers as Johann Gottlieb Fichte and George L. Mosse. Richard Wagner's wondrous Ring Cycle, articulating the transformation of the *volk* as all-encompassing universalism into obvious incarnate racism is glossed over too.

In short, Paris's creative documentary is qualitatively panoramic, but lacks insight into the two important phenomena she tries to relate: the expulsion of the Jews of Spain and the Genocide of East European Jewry by Nazi Germany. *The End of Days* reads like a dictionary of hundreds of facts, but few theories. Erna Paris gets full marks for the compilation of diverse sources within one volume. For this alone we owe her thanks, but the deep and insightful analysis will have to be left for other scholars.

**THE END OF DAYS**  
A Story of Tolerance,  
Tyranny and the Expulsion of  
the Jews from Spain  
By Erna Paris,  
Lester Publishing, 327 pages,  
\$28.95 (cloth)

The Spanish Inquisition's cleansing of the pluralistic underpinnings which had made Spain the richest and most tolerant of medieval European societies for almost 1,000 years, ended in 1492 with the capture of the last Arab Kingdom of Grenada by Queen Isabella and King Ferdinand; the expulsion of the Jews, and subsequent dispatching of Christopher Columbus from Palos to found a new Christian world across the Atlantic.

Muslim Spain, a utopia for secular and religious Judaism since the invasion of Tariq, the Moor, and

## Leaning creates pure fantasy

**The Travellers Go To The  
North Pole And Asia**  
By Boffin

written and handmade by  
John Leaning, 36 pages, \$25  
BY JUDY PEACOCKE

This is the third in a series of 36 page, hand drawn books for grandchildren of all ages by Boffin, a.k.a. John Leaning, one of Ottawa's best known architects and long-time Glebe resident.

The first book, *The Travellers' Tale: To the Far Eastern Lands* is pure fantasy travelling approximately from the mediaeval Mediterranean to a Far Eastern Shangri La. The second, *The Travellers' Canadian Tale*, continues the eastward journey, starting at Canada's Pacific Coast and finishing in Ottawa where they meet some westward bound European travellers, just like themselves, from which they conclude that the world must be round; so in the third book, *The Travellers go to the North Pole and Asia*, they set off to the North Pole and then to the South via Russia.

Boffin can hardly suppress his energy in the text as it swirls and swoops across the page with the illustrations. The hand lettering bursts into blossom or sunshine mirroring the text and adding to its cadence. It is fun to read aloud.

The clarity of the storyline draws

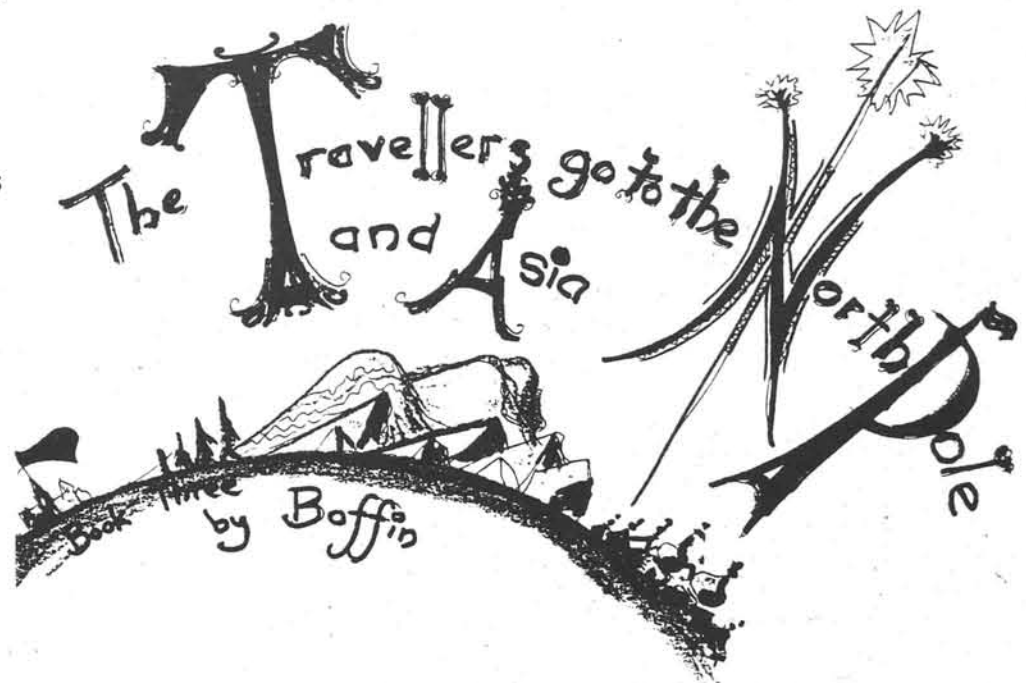
us in and carries us along with the Travellers through their adventures and calamities such as shipwreck, storm and pursuit by monster. The modes of travel are human scale - everything we can relate to comfortably - foot, canoe, skis and magic carpet. No intergalactic beaming by cyberspace warlords.

The story is complemented by an occasionally quaint, almost Edwardian, vocabulary which gives an added dimension. At times it is reminiscent of Lear, Nesbitt and Coleridge.

To this reviewer the stories seemed multilayered. The Travellers are faceless, generic Everyman and seem to represent questing humankind with its boundless curiosity. Despite their occasional fearfulness they travel hopefully and their optimism is always rewarded.

The drawings are mostly based on sketches made in places John Leaning has visited and this is reflected in the conviction of the artwork across the double page spread. The use of space, choice of colour, exuberance, energy and joy give the series a cohesive sense of balance and design.

Waterfalls, storms, rivers circle and tumble with power while jagged icebergs or craggy rocks loom up dangerously. The love of travel is



balanced by an awareness of the perils of nature.

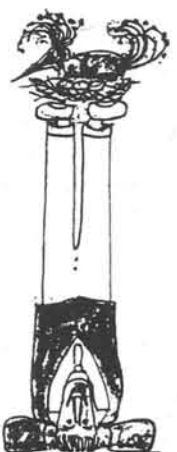
One or two of the sumptuous palaces recall the celebrated illustrator Edward Ardizzone.

The stories really never end because the end of each of these three stimulating books encourages the child to participate by continuing the Travellers' adventures. The books close with a self-portrait of Boffin standing on

his head with the jub-jub bird on her nest of prickly sticks perched on his feet. He looks quite comfy.

These handmade books priced at \$25 each may be obtained from John Leaning, 237-4375.

Judy Peacocke is a microbiologist and epidemiologist and published author of short stories and poetry. Her first novel has yet to find a publisher.



and then show Grandad .....

# CHURCH NEWS

## *Easter Services in the Glebe*

### CHURCH OF THE BLESSED SACRAMENT

Friday, March 28	7:30 p.m.	Penitential Service
Thursday, April 4	7:30 p.m.	Holy Thursday Adoration until Midnight
Friday, April 5	3:00 p.m.	Good Friday
	7:30 p.m.	Stations of the Cross
Saturday, April 6	8:00 p.m.	Easter Vigil
Sunday, April 7	9:00 a.m.	Easter Sunday
	11:00 a.m.	
	12:30 p.m.	Hungarian

### GLEBE-ST. JAMES UNITED CHURCH

March 31	9:30 & 11:00	Palm/Passion Sunday Holy Communion
April 4	6:00 p.m.	Seder Meal re-enacting the Last Supper
Maundy Thursday	7:30 p.m.	Tenebrae Service with Holy Communion
April 5	11:00 a.m.	Good Friday Service in the Sanctuary
April 7	9:00 a.m.	Potluck breakfast and communion
Easter Sunday	11:00 a.m.	Easter Celebration in the Sanctuary

### FIFTH AVENUE FREE METHODIST CHURCH

Sunday, March 31	11:00 a.m.	Palm Sunday
Thursday, April 4	7:30 p.m.	Tenebrae Service
Friday, April 5	10:30 a.m. to noon	Good Friday Service Communion will be served
Sunday, April 7	11:00 a.m.	Easter Sunday

### FOURTH AVENUE BAPTIST CHURCH

Sunday, April 7	11:00 a.m.	Easter Sunday, special musical presentation by the choir
-----------------	------------	--

### ST. GILES PRESBYTERIAN CHURCH

Sunday, March 31	11 a.m.	Palm Sunday Worship
Friday, April 5	11 a.m.	Good Friday Worship
Sunday, April 7	9:30 a.m. 11 a.m.	Easter Breakfast and Worship Family Easter Worship

### ST. MATTHEW'S ANGLICAN CHURCH

Tuesday, April 2	8 p.m.	Evensong
Maundy Thursday		
April 4	10 a.m. 7:30 p.m.	Holy Communion Holy Communion and Stripping of the Altar
Good Friday		
April 5	10 a.m. noon	Way of the Cross Good Friday Liturgy
Holy Saturday		
April 6	7 p.m.	The Great Vigil of Easter
Easter Sunday		
April 7	8 a.m. 10 a.m. 4:30 p.m.	Service Evensong

LINDSAY A. MACLEOD

**BARRISTER & SOLICITOR  
NOTARY PUBLIC**

Suite 4, 137 Second Avenue  
Ottawa, Ontario K1S 2H4

Tel: (613) 237-4880 Fax: (613) 237-7537

Hulse, Playfair & McGarry

**H&M** Funeral Homes  
233-1143

**Funeral  
Pre-Arrangement**

This important matter may be discussed at any of our 4 locations or within the privacy of your home. For information without obligation please call 233-1143.

Serving The National Capital Region  
McGarry Family: majority owners  
Founded 1925

## GLEBE DENTAL OFFICE

DR. KHALED HASHEM D.D.S.

738 - A, Bank Street, # 203, Ottawa, ON. K1S 3V4

\* BRACES  
\* TEETH WHITENING  
\* WISDOM TEETH EXTRACTION  
\* ROOT CANAL TREATMENT  
\* CROWNS - BRIDGES  
& DENTURES

**Available Evenings**

**(613) 232 - 2222**

Emergency: **(613) 232 - 2610**

## PAEDIATRIC SPORTS CARE

A sports medicine clinic for  
today's active youth

*Talk to someone who understands the needs  
of competitive athletes, and specializes in the  
injuries commonly associated with youth  
and children in sport.*

LORRAINE HENDRY, physiotherapist  
DR. PEGGY BAXTER, orthopaedic surgeon  
DR. KATHY KEELY, paediatrician  
CATHERINE O'HALLORAN,  
sport nutritionist/dietitian

**Overuse problems  
Knee pain & joint problems  
Underlying medical conditions:  
asthma, diabetes, eating disorders, menstrual problems**

**562-5970**

University of Ottawa 100 Marie Curie, Suite 200,  
Sports Medicine Centre Ottawa, Ontario K1N 6N5

March is Kidney month  
in Canada.  
With your  
support,  
we've got  
kidney disease  
on the run.



THE KIDNEY FOUNDATION  
OF CANADA

We can't live without you.

## Area churches fight growing unemployment

BY ROBYN LOUGHREY

The Centretown Churches Social Action Committee (CCSAC) is a coalition of 20 Ottawa churches in the downtown area working together on a variety of social issues. For some years, the main service provided by CCSAC has been the Emergency Food Centre (507 Bank Street). However, the Employment Assistance Program has become another major project.

Given the economic climate, as well as rapid changes in the work place, people in this area are in great need of help as they try to enter the work force. The Employment program is CCSAC's response to this need; it helps to prepare Centretown residents for job possibilities. For instance, counselling support is available so that people can have their work skills assessed. Also, clients can be coached in job search skills, résumé writing and interview techniques. Finally, the employment coordinator can make some referrals to adult education or work pro-

grams.

Recently, there has been a change in the client profile. Initially, the Employment program attracted the same people who use the Emergency Food Centre, young people, and new Canadians with professional backgrounds. Now, requests for help are coming from newly downsized mid-level wage earners with higher education and a more secure work history. In other words, people are using the program who never would have needed this kind of help before. More and more people are having to face living on a low income when it is not of their own volition. The churches in this area are working to address this newly emerging trend.

For further information about this program, please contact the coordinator:

Helen Wells (613) 232-9048  
507 Bank Street, Monday to  
Thursday, 8:30 - 4:30

The Employment Assistance program is funded by the Centretown Churches Social Action Committee.

## Glebe-St. James celebrates 100th anniversary on May 3

1996 marks an important milestone in our community, the 100th Anniversary opening of a church in the Glebe. In 1895 St. Andrew's Presbyterian Church started a mission in the Glebe with the opening of a Sunday School. The following year saw the beginning of the Glebe Congregation on Third Avenue. By 1905 the present building on Lyon was occupied, with St. Andrew's providing the new site and half the cost of construction.

1996 also marks the 25th Anniversary of the joining of Glebe United and St. James United to form the present congregation. Previ-

ously, St. James United occupied the building which is now the Glebe Community Centre.

Glebe-St. James bears witness to the faith of many generations. We plan to celebrate our history with an Anniversary Service on Sunday, May 3 at 11:00 a.m. We will meet in our present sanctuary and then walk down the street to the Community Centre and conclude our service in the St. James building. We hope many past members and ministers will be present. If you know a past member of Glebe-St. James, please invite them to celebrate with us.

## Unitarian Service committee fundraiser

Experience a taste of Bangladesh!

Unitarian Service Committee - Bangladeshi dinner with special presentation will be held Saturday, April 13th, at 7 p.m. at Glebe-St. James Church Hall. For tickets and information, call 234-6827 or 257-8011.

## Strategies for a new economy-discussion nights

Bank profits soar, jobs disappear, poverty spreads; How did we get here? Let's talk about the links between work and income. Is the deficit crisis an economic reality or a political tool? What are the spiritual and social roots of this injustice and poverty? What can we do? Are there alternatives? Join our Thursday evening discussions at First United Church, 397 Kent St. (at Florence) at 7:30 p.m. For information call Cc Cranston at 234-7616.

**March 21: Canadians in the International Economy**

**March 28: Faith Perspectives on Economic Issues**

**April 11: Who's Counting?: Sex, Lies and the International Economy**

**April 25: Community Economic Development**

**May 9: The Alternative Federal Budget**

## THE GLEBE CHURCHES WELCOME YOU

CHURCH OF THE BLESSED SACRAMENT (Roman Catholic)

Fourth Avenue at Percy Street 232-4891

Rev. Dr. Leslie Laszlo, Administrator

Rev. Anthony O'Sullivan in Residence

Rev. Dr. Leslie Laszlo, 233-8603 for Hungarian Community

Masses: Weekdays: 8:00 AM Saturday: 9:00 AM 4:30 PM

Sunday: 9:00 AM 11:00 AM 12:30 PM (Hungarian)

(Elevator Access for the handicapped. Loop system for the hearing impaired)

FIFTH AVENUE FREE METHODIST CHURCH

Fifth Avenue at Monk Street 233-1870

Minister: Rev. Stanley J.T. Hanna

Sunday Services Sunday School 9:30 AM

Worship Service 11:00 AM Evening Fellowship 6:30 PM

FOURTH AVENUE BAPTIST CHURCH

Fourth Avenue at Bank Street 236-1804

Minister: E.J. Cox

Sunday Services: Morning Worship 11:00 AM

GLEBE-ST. JAMES UNITED CHURCH

650 Lyon Street 236-0617

Pastors: Ann McKeown and Jack Nield

New Ventures in Celebration 9:30 AM (Family Service)

Worship 11:00 AM plus

Christian Development Program (ages 3-13)

ST. MATTHEW'S ANGLICAN CHURCH

Glebe Avenue near Bank Street 234-4024

Rector: The Rev. Canon Lydon McKeown

Assistant Curate: The Rev. Janet Smith

Holy Communion: 8:00 AM plus noon (2nd & 4th Sundays)

Choral Eucharist & Church School: 10:00 AM

Choral Evensong: 7:00 PM (first & third Sundays)

Weekday Eucharist: Thursday 10:00 AM

Counselling by appointment 234-4024

(Handicapped accessible from parking lot. Loop System)

THE RELIGIOUS SOCIETY OF FRIENDS (QUAKERS)

91 A Fourth Avenue 232-9923

Clerk: Betty Hurst

Sunday Service: 10:30 AM

OTTAWA CHINESE BIBLE CHURCH

Bank Street at Fourth Avenue (Fourth Avenue Baptist)

Pastor: Rev. Yu-Hsiung Chen 232-5211

Sunday Services: Worship 9:15 AM Sunday School: 11:00

OTTAWA CHINESE UNITED CHURCH

600 Bank Street 594-4571

Minister: Rev. Wing Mak

Sunday Services: Sunday School 9:30 AM

Bilingual Service 11:00 AM

OTTAWA DEAF FELLOWSHIP Total Communication

Fifth Avenue at Monk Street

Minister: Pastor Dick Foster

Sunday Services: Worship 11:00 AM Sunday School 9:45 AM

ST. GILES PRESBYTERIAN CHURCH

Bank Street at First Avenue 235-2551

Minister: Rev. Duncan Kennedy

Youth Coordinator: Colleen Smith

Sunday Service: Worship 11:00 AM Church School 11:15 AM

CATHEDRAL CHURCH OF THE ANNUNCIATION AND ST. NICHOLAS

(ORTHODOX CHURCH IN AMERICA) 55 Clarey Avenue 236-5596

Clergy: Father Andrew Morbey 523-1928

Deacon Symeon Rodger 725-9215

Vespers: Wed. & Sat. 6:30 PM Matins: Sunday 9:00 AM

Liturgy: Sunday 10:00 AM (Services mostly in English)

EMMANUEL BAPTIST CHURCH (Hispanic Ministry)

Bank St. at Fourth (Fourth Avenue Baptist)

Pastor Rev. Pedro Morataya 741-0628

Sunday Service: 3:00 PM Wed. Prayer Meeting 7:30 PM

## South branch library news

BY PAMELA ROSOLEN

Beginning in March, the South Branch will host a series of bi-monthly community author readings. The events will provide an opportunity to hear local authors read from their works and afterwards to participate in what promises to be a lively time of discussion. Well-known local author Clive Doucet will be our first. Please plan to join us on Thursday March 21st to hear him read from the manuscript of his latest novel *Men Of A Certain Age*. The reading will take place at 7:30 p.m. in our downstairs programme room. Clive's earlier works will be available to borrow from the library. A limited number of his books will be available for purchase and signing.

### TOP TEN

The following titles are the ten top requested items in the Ottawa Public Library system.

- |  |                   |
|--|-------------------|
| 1. The Rainmaker                             | John Grisham      |
| 2. Coming Home                               | Rosamunde Pilcher |
| 3. L Is For Lawless                          | Sue Grafton       |
| 4. Men Are From Mars Women<br>Are From Venus | John Gray         |
| 5. From Potter's Field                       | Patricia Cornwell |
| 6. The Piano Man's Daughter                  | Timothy Findley   |
| 7. The Dark Room                             | Minette Walters   |
| 8. The Canadian Revolution                   | Peter C. Newman   |
| 9. The Hundred Secret Senses                 | Amy Tan           |
| 10. The Horse Whisperer                      | Nicholas Evans    |

### CHILDREN'S PROGRAMMES

March Break programmes for children include the following:

- |                 |  |
|-----------------|--|
| Mon. March 11   | 2:00 p.m. <i>Little John the Clown</i> ; magical antics for 4 to 7-year-olds. Pre-registration. (60 min.)                |
| Tues. March 12  | 2:00 p.m. <i>Out-of-Pasture Jugglers</i> ; local buskers perform for ages 7 to 11. Pre-registration. (60 min.)           |
| Thurs. March 14 | 2:00 p.m. <i>Cannonball Simp</i> and other circus tales. Ages 4 to 7. Pre-registration. (45 min.)                        |
| Fri. March 15   | 2:00 p.m. <i>Paper Circus</i> ; create your own circus. Ages 6 to 9. Pre-registration. (60 min.)                         |
| Sat. March 16   | 2:00 p.m. <i>St. Patrick's Day in the Morning</i> ; stories and crafts for 4 to 7-year-olds. Pre-registration. (45 min.) |

Saturday programmes and storytime activities are listed below:

- |               |   |
|---------------|---|
| Sat. March 30 | 2:00 p.m. <i>April Fools</i> ; foolish fun for silly 5 to 7-year-olds. Pre-registration. (45 min.)          |
| Sat. April 6  | 2:00 p.m. <i>Easter Parade</i> ; crafty surprises for 4 to 7-year-olds. Pre-registration. (45 min.)         |
| Sat. April 20 | 2:00 p.m. <i>Happy B-earth-day</i> ; Earth Day activities for 5 to 8-year olds. Pre-registration. (45 min.) |

**Babes in the Library.** Music, rhymes and books for babies from birth to 18 months. Mondays at 9:30 a.m. March 4 to April 1, inclusive. Pre-registration.

**Bébés à la biblio!** Musique, comptines et livres pour les bébés de la naissance à 18 mois. Mardis à 9h30, du 5 mars au 2 avril, inclusivement. Inscription.

**Time for Twos.** Stories and films for two-year-olds Wednesdays at 9:30 a.m., March 6 to April 10, inclusive. Pre-registration.

**Storytime for 3 to 5-year-olds.** Mondays at 10:30 a.m., and Wednesdays at 10:30 a.m. and 2:15 p.m.

**Saturday Stories and Films.** Saturdays at 10:30 a.m. for 4 to 7-year-olds.

Please support  
our advertisers

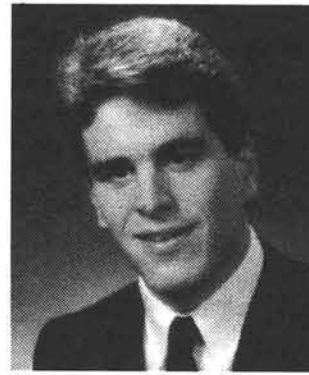
## Wanted: Glebe Collegiate Literary Arts Sponsors

Sponsors are wanted for English Literature year-end prizes for Glebe Collegiate students. Maths and science prizes abound but the arts seem to have been forgotten. Help us rectify this by committing to sponsor a grade prize for at least three years. Prizes could be a copy of the Giller or Governor-General Award books, or a monetary prize for a graduate. Book Clubs, local book stores and businesses and individuals are asked to contact Susan Zettell 730-5620 or Jan Fraser 237-8880 for further information. If there are more interested patrons than necessary prizes for English, awards will be extended to other arts courses. Or specify your preference for sponsorship and we will match you up with the appropriate course.



## Sean D. Caulfeild

Barrister and Solicitor.



## Your Neighbourhood Lawyer

General Practice of Law

Tel: 237-6773 Fax: 237-8026

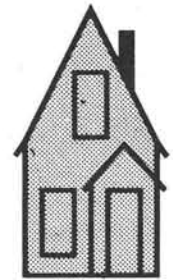
Sean D. Caulfeild B.A. (Hons), LL.B.  
200 First Avenue, Suite 301,  
Ottawa, ON K1S 2G6



## DAVID BRAULT GENERAL CONTRACTING LTD.



798-0802



## FOR ALL YOUR HOME IMPROVEMENTS



## RENOVATION SPECIALIST

Licensed Master Carpenter

Matthew Owers and Associates

A Family Business  
Three Generations in Ottawa

- Carpentry
- Masonry
- Foundation Repairs
- Water Damage Repairs
- General Home Improvements

726-9538

Professional Pre-purchase Home Inspection

This space acts as a free community bulletin board for Glebe residents. Drop off your GRAPEVINE message at the Glebe Community Centre including name, address and phone no. 'For Sale' items more than \$1,000 not accepted.

# GRAPEVINE

## FOUND

\* TABBY CAT, small affectionate thin, brown unneutered male, on Feb. 4. Call 233-9419

## FREE

\* VOLUNTEER AVAIL. to walk your dog; not a business. Call 232-0858

## EMPLOYMENT

\*WELL-MOTIVATED, RESPONSIBLE PAINTERS, CANVASSERS wanted. Make money now. Call Matt, 233-9275

## FOR SALE

- \*BRIO STROLLER, "sporty" (smaller) model, big wheels, baskets. \$95. 235-3615
- \*SOLID ROCK MAPLE DESK, 7 drawers, suitable for child or adult. 236-5967
- \*DINING ROOM TABLE, antique mahogany Duncan-Fyfe 64" X 42" X 29" high 3 leaves, extends to 102" Sits 8-10. Exc. cond. \$600. 230-4908; voice-mail.
- \*SMITH-CORONA CORONOMATIC TYPEWRITER with spare ribbon cartridge & re-write corrector ribbon cartridge. \$20. 237-5402
- \* FAX MACHINE GOLDSTAR model GF-340 \$150, 3 yrs old. Good cond, 10 one-touch, 50 memory dial stations. Delay send & polling features. Automatic, manual, or fax/tel reception; TA interface. Uses 98' rolls of thermal paper. Original packing, owner's manual & 4 rolls of paper incl. 233-0666.

## WANTED

- \*COTTAGE. Quiet & responsible adult looking for isolated cottage on lake for June-October occupancy in return for maintenance and favourable rent. Electricity not essential. References. 236-1261
- \*WHEELBARROW NEEDED for several weeks use for Sr. Kindergarten First Avenue School. Contact Mary 237-5718.
- \*TO RENT GARAGE. Minimum 1 year. A single or double Glebe area garage, good cement floor & proper garage door a must. Please call 233-1673
- \*PROFESSIONAL WOMAN, w. mature cat & car, requires one or two bedroom unfurnished apartment for 1st June. Pls call 235-2139, & leave your message.
- \*HAPPY TO PROVIDE housesitting to your home for last 2 weeks in June. Glebe home owner currently posted overseas seeks place to call home. One parent & one child. Pls call 234-6418 if your house needs watching over.

## NOTICES

- \*WIDOWED SUPPORT GROUP Wed. Mar. 20 at 7:30 pm at YM/YWCA Rm. 137, 180 Argyle Ave. Topic: *Filing income tax for the deceased.*
- \* FREE SEMINARS, Randall's Paints, 555 Bank St. Faux finishing Wed. Mar 13 7-9 pm, Home Decorating Wed. Mar 20 7 - 10 pm. Call to reserve your seat. 233-84441. Limited space available.
- \*OFF THE WALL USED ART SALE I'm looking for vendors for a possible May sale in the Glebe. Pool your used prints & art & rent a booth. Info: L. Fagan 728-1945

## NOTICES

- \*RUMMAGE SALE on Fri., March 29. St. Giles Presbyterian Church. Bank St. at First Avenue, side door entrance. From 4 p.m. to 7:30 p.m. Muffin & coffee bar.
- \*AUCTION FUND-RAISING EVENT for Good Companions, 670 Albert Street. Sat. March 30 10 a.m. Viewing 9 a.m. Free parking across at All-Park Inc. Terms: Cash, cheques, Mastercard, Visa. Contact person: Brian M. Jones, 236-0428
- \*SENIORS INCOME TAX CLINIC, free income tax clinic to assist senior citizens w. incomes of less than \$25,000 at Abbotsford Senior Centre on Saturday, March 30. Call 230-5730 to book an appointment. The Abbotsford Senior Centre is located at 954 Bank Street
- \*WOMEN'S WEEK INFO FAIR. Informative, fun & free! Visit the Carleton University International Women's Week Information Fair, 11:00 a.m. - 3:00 p.m., Baker Lounge, fourth floor, University Centre, on Tues. March 5.
- \*LOOKING FOR WORK all week long? Take the morning off!! Come join other job hunters for coffee & conversation. Beginning Friday, March 22, 10:00 - 11:30 a.m. Glebe Comm. Centre 690 Lyon St. Contact Mary at 742-8254
- \*SPRING SALE, Ottawa Twins Parents Association. Features children's clothing, equipment & toys. 11:00 a.m. to 1:00 p.m., Mar. 30, Woodroffe Ave. School, north of Carlingwood Mall. Please, no strollers!!
- \*SASKATOON ST. PAUL'S HOSPITAL School of Nursing Alumni, Ottawa-Carleton Branch. For information call Rae 592-8881

## NOTICES

- \*BASEBALL: Glebe Little League (boys & girls 7-18) spring baseball & softball open registration March 19 & 21, 7-9 p.m., Mutchmor School, 185 Fifth Ave. (use Fourth Ave. door). Returning players only register first March 18, 7-9 p.m. at Mutchmor. Details 567-7347.
- VOLUNTEERS**
- \*VOLUNTEERS REQUESTED at Élisabeth-Bruyère Pavilion on Mon. 6:30 - 8:30 p.m. to assist weekly prayer group for chronic care residents 562-6364



## BABY FAIR

Over 90 exhibitors!

- Educational Toys & Books •
  - Handmade Clothing • Carriers •
  - Parenting & Health Care Information •
  - Child Care / Educational Services •
- ... and much more ...
- plus ... Play Areas, Clowns, Face Painting, Car Seat Safety Clinic, Door Prizes

**SUNDAY, MARCH 17**  
Lansdowne Park, Exhibition Hall  
11 a.m. to 5 p.m.

Admission: Adults \$4 or 2 for \$7.  
Half of proceeds donated to the Cradle Fund, Ottawa General Hospital

**10% discount on all Indisposables products at the fair!**

## PHASE 2

QUALITY RECYCLED CLOTHING

**SPRING FABRICS** by the metre/yard and remnants. Everything under \$5.95/metre. In a NEW department at Phase 2 Clothing.

Quality Recycled Brand Name Clothing for the whole family. Professionally cleaned and pressed.

Monday - Wednesday	9:30 - 6:00
Thursday - Friday	9:30 - 9:00
Saturday	9:30 - 6:00
Sunday	12:00 - 5:00

702 Bank at Glebe

## PHASE 2

QUALITY RECYCLED CLOTHING

Brand names for the whole family at amazingly low prices.

Professionally cleaned and pressed.

We now have fabrics and remnants, as well.

Monday - Wednesday	9:30 - 6:00
Thursday - Friday	9:30 - 9:00
Saturday	9:30 - 6:00
Sunday	12:00 - 5:00

702 Bank at Glebe

**The Glebe Clothing Shop** at St. Matthew's Church Glebe Ave. at Bank St.

Open every  
Monday 9:30 - 11:00 a.m.  
Thursday 7:00 - 9:00 p.m.

"Nearly New" adults' and children's clothing at low prices. Proceeds from the Shop are used for social outreach programmes.

During March all winter clothing is 1/2 price!

## THE SEPARATION & DIVORCE EXPERIENCE WORKSHOP

The "Separation & Divorce Experience Workshop" will cover many topics including Your Legal Rights, Children and Custody, and the Emotional and Social Impact of Separation.

**DATES:** EVERY THURSDAY, FROM APRIL 11 TO MAY 16, 1996  
**TIME:** FROM 7:30 P.M. TO 9:30 P.M.  
**LOCATION:** The Ottawa Court House, Jury Assembly Room 161 Elgin Street, 3rd Floor, Ottawa  
**COST:** \$80.00 (GST INCLUDED)

For information or registration, contact Michelle Assaff at (613) 233-7386

## A ACCEPTABLE ALTERNATIVE MINI STORAGE

Hume Trading Company Limited  
**MINI STORAGE SPACE**

From \$20.00 per month. Security fenced outside storage also available from \$15.00 per month for cars, boats, and trailers.

Call A Acceptable Alternative Self Storage at **822-7666**.  
4863 Bank St. Serving the Glebe for over 36 years.

Rent-A-Wife INC

CLEANING  
PARTY SERVICE  
HOME REPAIRS  
HOUSEHOLD ORGANIZING

HOUSEHOLD ORGANIZERS

Time to tackle the house - Let us help you with the basement, the kitchen cupboards, the windows, perhaps a coat of paint on the wall!

**10% Discount (for cleaning only)**

Laurel 789-2246





Glebe Neighbourhood Activities Group

690 Lyon Street South

Ottawa, Ontario

K1S 3Z9

Tel: 564 1058



City of  
Ville d'Ottawa

The Glebe Neighbourhood Activities Group presents...

## '60s Dance

Starring: Bruce and The Burgers

Saturday, April 13 1996

8:00 p.m. - 1:00 a.m.

Tickets are \$10.00

Can be purchased at the Glebe Community Center

Cash Bar, Great Music, Good Times!

*Spring Craft Fair*

*Saturday, March 30*

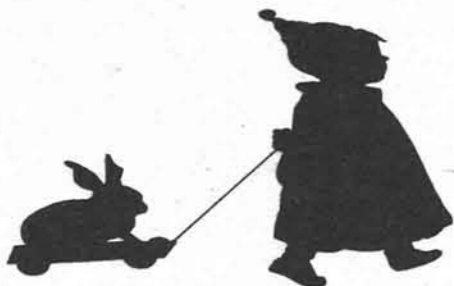
*10:00 a.m. - 5:00 p.m.*

*Admission is free!*

*Glebe Community Center*

*690 Lyon St. South*

*564-1058*



**G.N.A.G. Soccer  
Registration  
Monday April 1  
7:00 p.m. - 8:00 p.m.  
See inside ad for details**

### SPRING PROGRAMME REGISTRATION

*Saturday, March 23*

*10:00 a.m. - 2:00 p.m.*

*Check out the center page of the Glebe Report for details.  
Don't miss out on all the exciting programmes offered to all ages.*

*For further information, please call 564-1058.*

### Spring Flea Market Registration

**Monday, March 18**

**7:00 p.m. - 8:30 p.m.**

**\$21.40 per table (price includes G.S.T.)**

Actual Flea Market date: Saturday, April 20

Time: 10:00 a.m. - 2:00 p.m.